

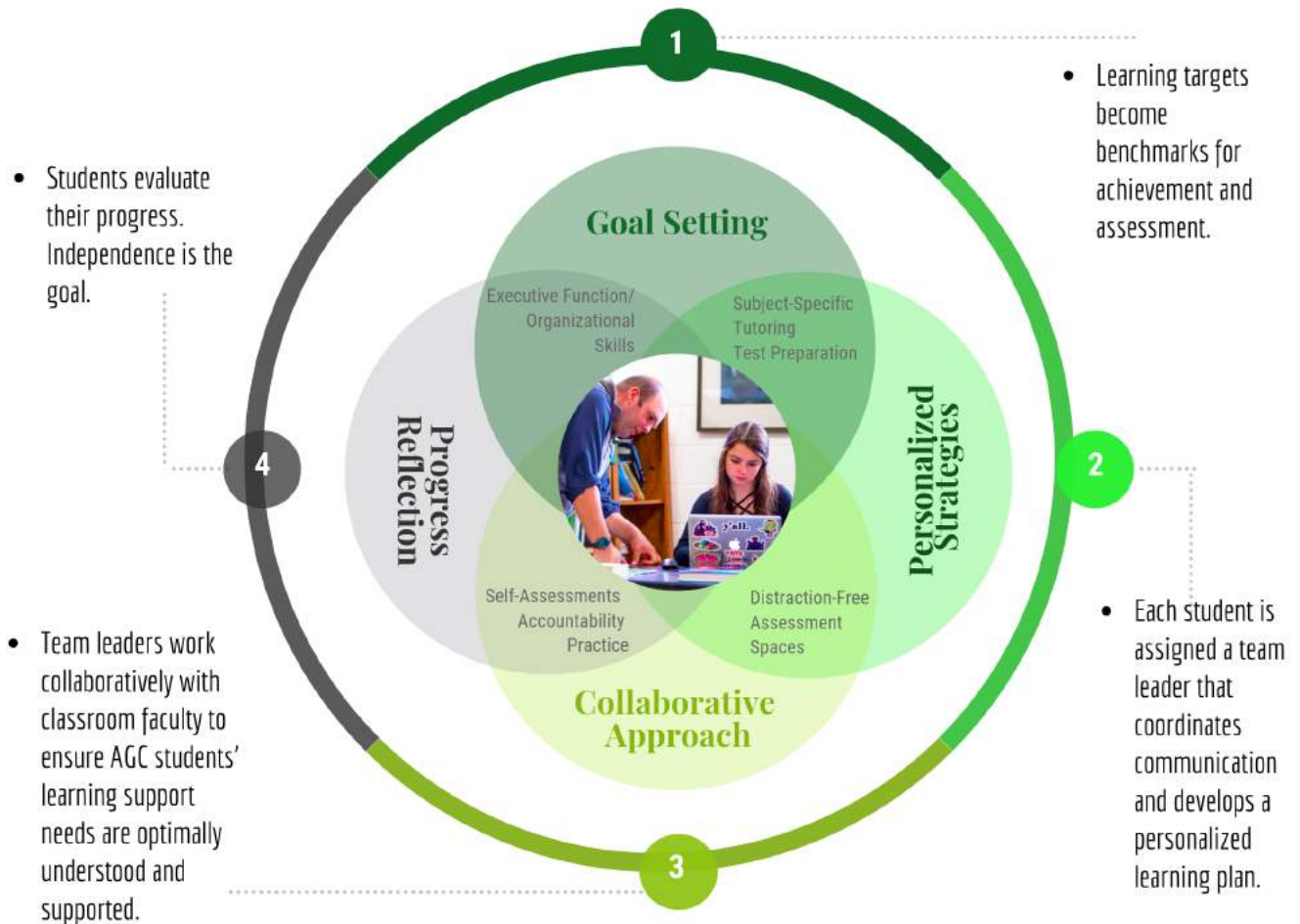


Academic Guidance Center



Partnerships that engage students and enhance learning

The AGC is designed to support students with minor learning differences, possible academic gaps or insufficient study habits. AGC embraces a comprehensive approach to academic coaching, wherein each student receives support from a team of qualified faculty led by the AGC Director. Communication to the student's "team" - advisor, parents, teachers, dorm parent is managed by an AGC Coach and is paramount to coordinated support.



OUR MISSION

Empower students to become personally accountable and engaged in their learning and educational experience. The Academic Guidance Center (AGC) is principled on developing personalized academic strategies, academic confidence and self-awareness to achieve identified, individualized goals and classroom success.



The Approach

Celebrating and Supporting Neurodiversity

*Academic Guidance is scheduled as a class period and meets regularly within the school day: **two, three or four times each week** are options for every student at Hebron.*

*During Academic Guidance sessions, **students meet one on one** with an Academic Guidance Center coach. The sessions are designed to provide strategies for particular learning challenges unique to that student. Homework completion is not the sole goal of AGC, however the assignments and current content may be the context for improving skills and developing strategies.*

*Students in the Academic Guidance are able to participate in **Structured Study Hall**, where academic guidance and support is available to students as needed.*

***AGC works closely with each student's teachers, advisor and dorm parents.** The structured communication with faculty allows AGC to identify areas of concern and growth for the participant and to coach classroom faculty on strategies for assisting the student in their respective disciplines.*

*The Academic Guidance Department is available for un-timed tests and/or as **distraction free testing environment.***



SUPPORT TO SUCCEED



“Our AGC faculty take a personalized approach to supporting each student to develop the academic skills, independence, and confidence necessary to achieve success, both at Hebron and beyond. And, above all, it is the unwavering demonstration of care conveyed to each student, and the resulting strong relationships formed, that makes our AGC team most impactful”

The Process

Our strategy is **not** one size fits all.

*Students, parents, teachers, advisors, and the AGC staff all work together to help each student achieve academic success. **Each student is assigned a team leader** that coordinates communication, develops the learning plan, and ensures that the student's learning profile is updated and utilized by teachers.*

*Each student's learning plan in AGC is individualized and incorporates a wide variety of interventions, such as study skills, written expression instruction, scaffolding, metacognitive skills, self-advocacy, and reading comprehension support. Students enrolled in the Academic Guidance Center are assigned a class period to work directly with the staff in AGC on improving executive function skills. Typically, **Academic Guidance classes are taught one-on-one or one-on-two.***

*The AGC staff oversees and reports progress through recorded notes, communication with teachers and parents, and term and midterm evaluations. **The student curriculum may change based on feedback from the student, teachers, or their term/midterm grades.***

Professional development meetings, online resources, and professional conferences are utilized by faculty to ensure that students enrolled in AGC are receiving learning supports based on current best practices.





Program Outcome

*The intent of the Academic Guidance Center is to build a stronger and more **independent** student who is aware of their strengths and challenges. Students learn to manage their academic work, advocate for themselves and use academic tools and strategies to **succeed**.*





FIND YOUR PURPOSE

HEBRONACADEMY.ORG