A stylized, flat-design illustration of the Northfield Mount Hermon campus. The scene is set against a light blue sky with a large, bright yellow sun in the upper left corner and a few small, white, cloud-like shapes. In the foreground, there are green rolling hills and a dark green base. The campus buildings are depicted in a simplified manner: a large, light-colored building with a prominent arched entrance and blue accents on the left; a smaller, red building with a blue roof and white columns in the center; and a white building with a blue roof and arched windows on the right. A small, white, clock-tower-like structure is also visible. The overall style is clean and modern, using a limited color palette of yellows, blues, greens, and reds.

# 2025-26 Facts and Figures

## Where will you take your talents, ideas, and curiosity?

The decision to attend boarding school is a big one. You want to be sure that the school you select is the right place for you — a place where your talents, ideas, and curiosity can really take root; where you'll be able to explore and develop new interests and passions; where you'll be supported as you grow toward your full potential.

- At NMH, we'll empower you to discover and follow your passions in a community that asks you to show up fully and makes room for your questions and ideas.
- You'll learn and grow in every part of your NMH experience: in the classroom, in athletics, in clubs and activities, in the dorm and the dining hall, and in our workjob program.
- Our teachers, advisors, coaches, and other adults will be behind you every step of the way, mentoring and guiding you.

Please email us at [admission@nmhschool.org](mailto:admission@nmhschool.org) if we can help you navigate this next step in your educational journey.

## Education for the Head, Heart, and Hand

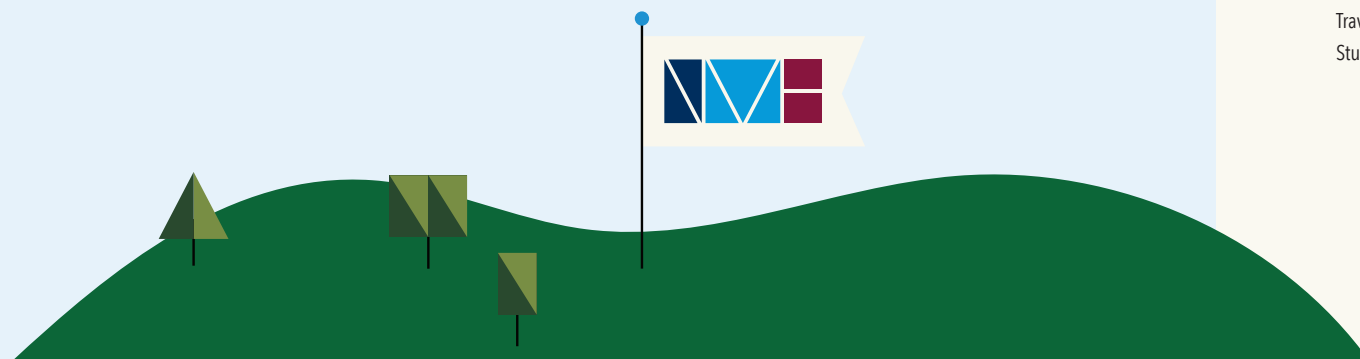
Northfield Mount Hermon engages the intellect, compassion, and talents of our students, empowering them to act with humanity and purpose.



Northfield Mount Hermon is an independent boarding school for students in grades 9 to 12, plus a postgraduate year. We're located in the heart of New England, on the banks of the Connecticut River in western Massachusetts.

In "Facts and Figures," you'll read about some of the many exciting opportunities waiting for you at NMH. Check it out. Then visit us in person or at [nmhschool.org](http://nmhschool.org) to learn more.

Fast Facts . . . . .	2	A Day at NMH . . . . .	15
Academics . . . . .	3	Athletics . . . . .	16
CMAP . . . . .	7	The Arts . . . . .	17
NMH 360. . . . .	9	Workjob Program . . . . .	18
Student Support. . . . .	10	Cocurricular and Extracurricular Activities . . . . .	19
Our Faculty . . . . .	11	College Matriculation . . . . .	21
Facilities . . . . .	12	How to Apply. . . . .	22
Travel Opportunities. . . . .	13	Tuition and Fees . . . . .	24
Student Life . . . . .	14	Need-Based Scholarships. . . . .	25



# Fast Facts

## ENROLLMENT

Students: 628  
Boarding Students: 85%  
Day Students: 15%  
9th-Graders: 98  
10th-Graders: 170  
11th-Graders: 170  
12th-Graders and Postgraduates: 190

## DIVERSITY ON CAMPUS

Countries Represented: 54  
States Represented: 30  
International Students: 25%  
Domestic Students of Color: 34%

## TUITION AND SCHOLARSHIP

Boarding Student Tuition: \$77,070  
Day Student Tuition: \$51,244  
Need-Based Scholarships: \$13.1 million  
Students Receiving Aid: 38%  
Average Grant: \$56,032 boarding,  
\$35,539 day

## ACADEMICS

Teaching Faculty: 80 full-time  
Student-to-Teacher Ratio: 6 to 1  
Size of Student Advising Group: 6  
Average Teaching Experience: 21 years  
Advanced Degrees: 74%  
Average Class Size: 13 students  
Academic Courses: 167  
ESOL Classes for Language Learners  
NMH's Advanced Scholars Program: a robust and relevant curriculum that allows for a deeper intellectual dive. Twenty-nine advanced courses are offered in 2025-26, along with honors courses. In addition, students enrolled in any of the senior English electives can earn advanced course credit with extra work.

# Academics

NMH's intensive, immersive curriculum will help you go further and do better. In small classes with dedicated teachers, you'll push your intellectual boundaries and accomplish things you didn't think you could. Traditional borders will break down: between math and science, social justice and sustainability, the campus and the world beyond. NMH not only will prepare you for college, it will broaden your view of the world and how you can change it.

## THE ARTS

### DANCE

Contemporary Dance Forms  
Dance Technique and Choreography  
Honors Ballet: Advanced Technique and Theory  
Honors Intermediate Ballet Technique and Theory

### DANCE

Contemporary Dance Forms  
Dance Technique and Choreography  
Honors Ballet I: Technique and Theory  
Honors Intermediate Ballet II: Advanced Technique and Theory

### THEATER

Acting I  
Acting II  
Acting in Production  
Costume Design  
Directing  
Playwriting  
Design for the Stage I  
Design for the Stage II  
Theater Production I  
Theater Production II

### VISUAL ARTS

Advanced Drawing and Painting Portfolio  
Advanced 2D Portfolio  
Advanced 3D Portfolio  
Arts Foundation in the Visual Arts  
Ceramics I  
Ceramics II  
Ceramics III  
Darkroom Photography I  
Darkroom Photography II  
Digital Photography I  
Digital Photography II  
Drawing and Composition I  
Drawing and Composition II  
Graphic Design  
Intensive Studio  
Illustration/Visual Storytelling  
Painting I  
Painting II

### MUSIC

Honors Applied Music I  
Honors Applied Music II  
Musicianship  
Advanced Musicianship  
Arts Foundation in the Performing Arts: The Power of Art  
Electronic Music Studio I  
Electronic Music Studio II  
Honors Chamber Ensemble:  
NMH Singers  
Honors Chamber Ensemble:  
Select Treble Ensemble  
Honors Chamber Orchestra  
Honors Jazz Combo  
The Creative Impulse: Religion and the Performing Arts  
Private Music Lessons

# Academics

Sculptural Forms I  
Sculptural Forms II  
Two-Dimensional Design  
Video as Visual Art I  
Video as Visual Art II

## HUMANITIES

### ENGLISH

Humanities I: English  
World Literature  
American Literature  
Shared Voices: Interdisciplinary  
U.S. History and American Literature  
Reading and Writing Seminar  
Big Books: Authors You Should Meet\*  
Borderlands\*  
Comic Studies and Theory  
Coming of Age: Reading the Bildungsroman\*

Creative Writing  
Empowering the Powerless\*  
Film  
Multimedia Production: Making an Arts, News,  
and Culture Magazine  
Global Women's Literature: Mothers,  
Sisters, Daughters Speak\*  
Journalism  
Reading and Writing Poetry\*  
Reading and Writing the Land\*  
Reading and Writing Short Fiction\*  
Postgraduate English  
Queer Lives and Literature\*  
Shakespeare\*  
The Art of Creative Nonfiction\*  
The Bible as Literature\*  
The Pleasures of Difficulty\*

*\* denotes a 400-level English seminar*

### ESOL (ENGLISH FOR SPEAKERS OF OTHER LANGUAGES)

ESOL: English for Special Purposes I-IV

### HISTORY

HUM II: World History (Each spring, students in this  
course have the option to take part in a trip to one  
of these countries, which alternate: Brazil, Spain/  
Morocco, or South Africa.)  
Topics in World History  
Advanced Studies in World History:  
East Asia  
Advanced Topics in United States History: Lifting as  
We Climb  
Advanced Topics in United States History: For the  
People  
Foreign Policy  
Global Ethics and Climate Change  
Government and Civil Liberties  
In Their Footsteps: Rethinking  
Women's History  
NMH History in Context

Shared Voices: Interdisciplinary  
U.S. History and American Literature  
The Ancient Mediterranean World  
The Islamic Middle East  
United States History Survey  
Warfare, Humanity, and Society

### SOCIAL SCIENCE

Economics  
Advanced Topics in Economics  
Psychology  
Advanced Psychology

### RELIGIOUS STUDIES

HUM I: Religious Studies and Philosophy  
HUM II: World Religions (Each spring, students  
in this course have the option to take part in a  
trip. Destinations alternate among Brazil, Spain/  
Morocco, and South Africa.)

Bioethics  
Ethics  
Global Ethics and Climate Change  
Philosophy  
Religion, Power, and Text: Sacred Stories  
The Creative Impulse: Religion  
and the Performing Arts  
The Islamic Middle East  
World Religions and  
Contemporary Issues

### MATH

Algebra I  
Geometry with Topics in Algebra I  
Geometry  
Honors Geometry  
Algebra II with Topics in Algebra I  
Algebra II  
Honors Algebra II  
Algebra Survey  
Topics in Trigonometry

Statistics  
Advanced Statistics  
Precalculus  
Honors Precalculus  
Calculus  
Advanced Calculus I  
Advanced Calculus I and II  
Advanced Mathematics II: Multivariable Calculus  
Advanced Mathematics II: Linear Algebra  
Advanced Mathematics II: Proof and Logic

## COMPUTER SCIENCE

Introduction to Computing Programming  
Web Development I  
Web Development II  
Discrete Math with Python  
Advanced Topics in Computer Science

## SCIENCE

### ENVIRONMENTAL SCIENCE

Environmental Studies  
Environmental Studies: An International Perspective  
Food Systems  
Geology  
The Science of Farming  
Advanced Environmental Science

### BIOLOGY

Biology  
Honors Biology  
Advanced Biology: Biotechnology  
Advanced Biology: Field Studies  
Bioethics  
Human Physiology

### CHEMISTRY

Chemistry  
Honors Chemistry  
Forensic Science



Academics

Chemistry Research Methods  
Advanced Chemistry I  
Advanced Chemistry II: Environmental Chemistry

PHYSICS

Robotics  
Physics  
Physics with Trigonometry  
Advanced Physics I: Mechanics  
Advanced Physics II: Electricity and Magnetism  
Engineering Physics  
Astronomy  
The Physics of Global Energy

WORLD LANGUAGES

CHINESE

Chinese I  
Chinese II  
Honors Chinese II  
Chinese III  
Honors Chinese III  
Chinese IV  
Honors Chinese IV  
Advanced Studies in Chinese I:  
Contemporary China and Chinese Culture  
Advanced Studies in Chinese II: Chinese Literature

FRENCH

French I  
French II  
Honors French II  
French III  
Honors French III  
French IV: Service-Learning Project  
French IV: Contemporary Issues in the French-Speaking World

Honors French IV: Contemporary Issues in the French-Speaking World  
Advanced Studies in French I:  
The Francophone World in Depth  
Advanced Studies in French II:  
Contemporary French and Francophone Culture Through Literature and Film

LATIN

Latin I  
Latin II  
Latin III  
Advanced Latin Literature:  
Politics, Power, and Populace  
Advanced Latin Literature:  
Republic to Empire

SPANISH

Spanish I  
Advanced Spanish I  
Spanish II  
Honors Spanish II  
Spanish III  
Honors Spanish III  
Spanish IV  
Spanish IV: Service-Learning Project  
Honors Spanish IV  
Advanced Studies in Spanish I: Equity and Inclusion Across Hispanic Cultures  
Advanced Studies in Spanish II:  
Latin American Literature

NMH’s College-Model Academic Program (CMAP)

At NMH, you’ll take three courses, which meet in 70-minute sessions each semester — providing the kind of deep intellectual dive that most students don’t experience until college.

DAILY SCHEDULE

MON		TUE		WED 1		WED 2		THU		FRI		
Extra Help 8-8:40		Extra Help 8-8:40		Flexible (Activities Vary) 8-8:40		Flexible (Activities Vary) 8-8:40		Extra Help 8-8:40		Extra Help 8-8:40		
A 8:50-10		A 8:50-10		A 8:50-9:50		C 8:50-9:50		A 8:50-10		A 8:50-10		
All School Meeting 10:10-10:40		Flexible (Activities Vary) 10:10-10:40		B+ 10-11		D+ 10-11		Campus/Dorm Meeting 10:10-10:40		Student Leader Meeting 10:10-10:40		
Lunch 11-1:50	B 10:50-noon	Lunch 11-1:50	B 10:50-noon	Lunch 11-1:30	BD* 11:10-12:10	Lunch 11-1:30	All-School Meeting 11:10-12:10	Lunch 11-1:50	B 10:50-noon	Lunch 11-1:50	B 10:50-noon	
	C <sub>1</sub> 12:10-1:20		C <sub>1</sub> 12:10-1:20						C <sub>1</sub> 12:10-1:20			
	C <sub>2</sub> 12:40-1:50		C <sub>2</sub> 12:40-1:50	Athletics Depart 1:30		Athletics Depart 1:30			C <sub>2</sub> 12:40-1:50		C <sub>2</sub> 12:40-1:50	
Individual Advising 2-2:20		Individual Advising 2-2:20		Arts, Athletics, and Cocurriculars		Arts, Athletics, and Cocurriculars		Group Advising 2-2:20		Individual Advising 2-2:20		
D 2:25-3:35		D 2:25-3:35						D 2:25-3:35		D 2:25-3:35		
E 4:05-5:45 Arts, Athletics, and Cocurriculars		E 4:05-5:45 Arts, Athletics, and Cocurriculars						E 4:05-5:45 Arts, Athletics, and Cocurriculars		E 4:05-5:45 Arts, Athletics, and Cocurriculars		
Dinner 5-7:30		Dinner 5-7:30		Dinner 5-7:30		Dinner 5-7:30		Dinner 5-7:30		Dinner 5-7:30		
Rehearsals 6:30-8		Cocurriculars 6:30-8		Affinity Groups 6:30-8		Affinity Groups 6:30-8		Rehearsals 6:30-8		Cocurriculars 6:30-8		
Study Hall 8-10pm (Monday-Thursday); 7:30-9:30 pm (Sunday)										Weekend Activities		

B+ (B block and B Tuesday/Friday half credits)    D+ D block and D Tuesday/Friday half credits)    BD\* (all Monday/Thursday half credits)



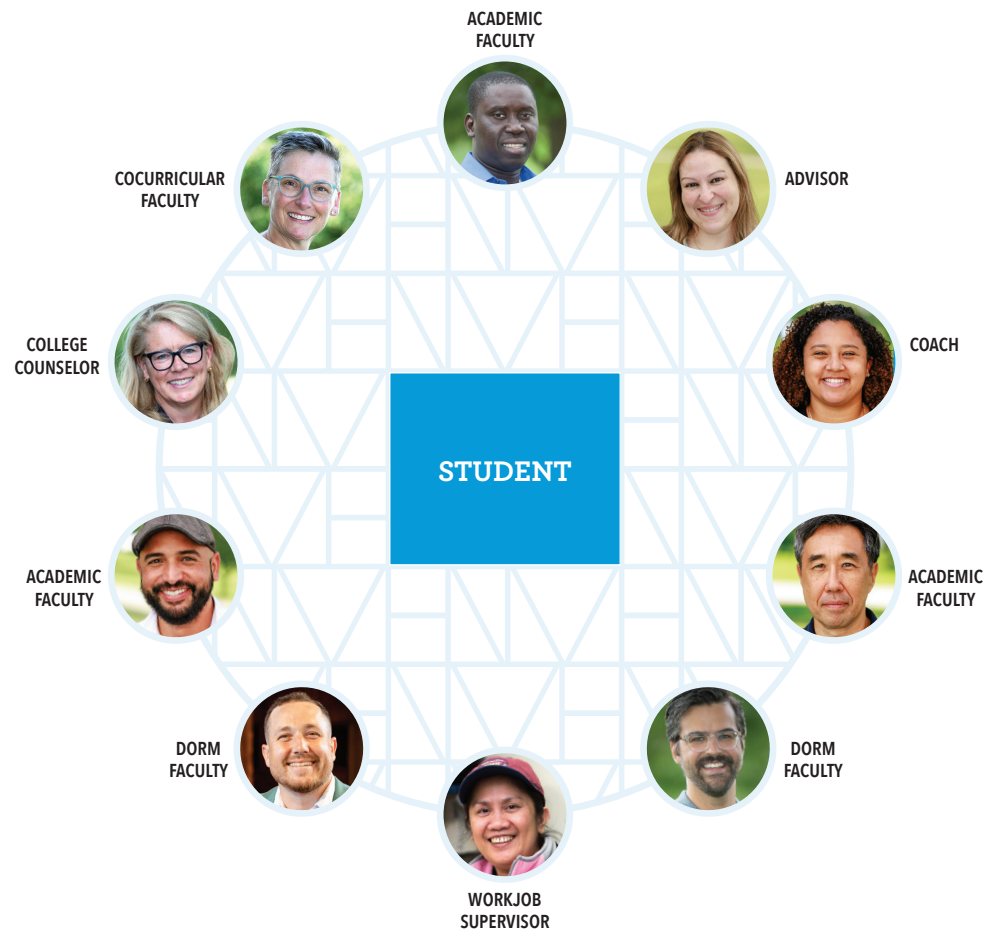
# Advantages of CMAP

Schedule Elements	Northfield Mount Hermon	Public Schools	Most Private Schools
Longer Class Periods	In a <b>70-minute class</b> , teachers can employ a variety of learning techniques, such as small- and large-group work, class discussions, debates, peer review, lab work, hands-on projects, and application of theories.	45-50 minutes; limited variety in learning techniques	45-50 minutes, limited variety in learning techniques
Deeper Exploration	Students are immersed in a subject for <b>70 concentrated minutes</b> in each class.	45-50 minutes for each class	45-50 minutes for each class
More Major Courses per Year	Each year, students take <b>six core academic courses</b> (covering specific areas of math, English, science, history, and world languages): three full-year equivalents in a semester.	only 5 core academic classes	only 5 core academic classes
Focused Homework	Students focus <b>140 to 270 minutes</b> of homework time on three core courses, deepening their immersion in each subject.	60-300 minutes on 5 core courses	150-300 minutes on 5 core courses
More Student-Teacher Access	NMH faculty teach an average of <b>30 students each semester</b> , so they know each student and can better meet their needs.	80-150 students each	48-100 students each
Faster Learning	Two years of a subject can be covered in one year. (Examples: Algebra II in the first semester, Precalculus in the second; or French III in the first semester, French IV in the second.)	Not available	Not available
More Arts Options	Students are able to have performing and visual arts experiences during the academic day, during the cocurricular periods from 4:05 to 5:45 pm, or after dinner from 6:30 to 8 pm.	Not available	Sometimes available

# NMH 360

Every NMH student is surrounded by a network of compassionate adult mentors. This network of advisors, teachers, coaches, and residential staff is here to support and guide you on your individual journey and help you become the best version of yourself.

NMH 360 is an intentional, scaffolded curriculum for learning outside the classroom that connects across students’ lives. It allows us to best care for and know students and to set you up for developing the literacies and learning the core competencies at the heart of an NMH education.



# How We Support Students

Every NMH program involves adults who support each participating student. Some of these adults make up the core of the student’s support network — they’re connected to the student all year and meet with them on a regular basis. Other adults in the network change depending on the trimester (for cocurriculars and workjobs) or semester (for academic classes), but they also get to know the student well, and they communicate with the student’s main advisor as needed. Together, this group of adults gives the student a variety of people to whom they can turn for counsel and support.

Student-Advisor Ratios	Every student has an advisor and each advisor has direct responsibility for five to seven students.
Dorm-Affiliated Advisors	Students and their advisors are based in the same dorm. This means that all advisors either live in the dorm or are affiliated with the dorm, and most have weekly evening dorm responsibilities. This residential advisor-advisee connection makes it easy to gather as a group, allows advisors to establish an adult community presence in each dorm, and enables advisors to understand and monitor group dynamics in the dorm. Dorm staff meet every other week to discuss student residents, schedule duties, and plan activities.
Student-Teacher Ratios per Semester	NMH faculty members teach an average of 30 students across two classes each semester. Because teachers have residential responsibilities and serve as advisors, they are able to observe and support students in the evening and on weekends.
Residential Leaders	Student Residential Leaders (RLs) are a part of a team with the adults based in their dorms. RLs are integral to supporting students as individuals and help maintain a positive dorm culture.
Dorm-Based Folders	Two dorm-based electronic folders exist for the students and the faculty associated with each dorm. The first is accessible only to the faculty, allowing the adults to communicate with each other about student concerns and the smooth functioning of the dorm. The second is accessible to students and faculty and provides daily news and information about dorm activities.

# Our Faculty

Northfield Mount Hermon works to recruit the finest faculty from around the world. Evaluation processes and professional development opportunities ensure that faculty stay current in the best educational practices, in and out of the classroom.

80 full-time faculty members  
 21 average years of teaching experience  
 74% have advanced degrees

NMH teachers, staff, and coaches regularly attend and present at key conferences and trainings. This year, faculty participated in:

- Fencing lessons
- World Pipe Band Championships
- The Erdmann Institute for Enrollment Leadership
- National Federation of State High School Associations Fundamentals of Coaching course
- National Federation of State High School Associations Coaching Cross-Country course
- International Society for Technology in Education Live 2025 conference
- Carnegie Mellon Robotics Academy
- Fermilab Center QuarkNet teacher workshop
- Professional theater observations in New York City
- School of Leadership, Afghanistan (SOLA) program in Rwanda
- Myofascial cupping practitioner certification
- Northern Italy trip
- Curriculum work for Ecoleader initiatives
- Gilder Lehrman Institute of American History Teacher Symposium
- Summer Figure Sketch in Clay program
- TABS Residential & Student Life Institute
- Tidelines Institute climate education summit in Alaska
- Bates Dance Festival
- Intersections of Buddhism and Hinduism: The Ramakien in Bangkok, Thailand
- International Dunham Technique Conference
- National Athletic Trainers' Association Clinical Symposia and Athletics Trainers Expo

Master’s Programs, Classes, and Curriculum Development:

- Graduate Certificate in Spanish Heritage Language Education, George Mason University
- Master of Business Administration, University of Maine
- Master of Education in Mathematics, James Madison University
- Athletic Administrator Certification, National Interscholastic Athletic Administrators Association

## Facilities

NMH is located in rural western Massachusetts, atop a broad hill, with inspiring views up and down the Connecticut River Valley. The campus has a mix of historic and contemporary buildings and includes:

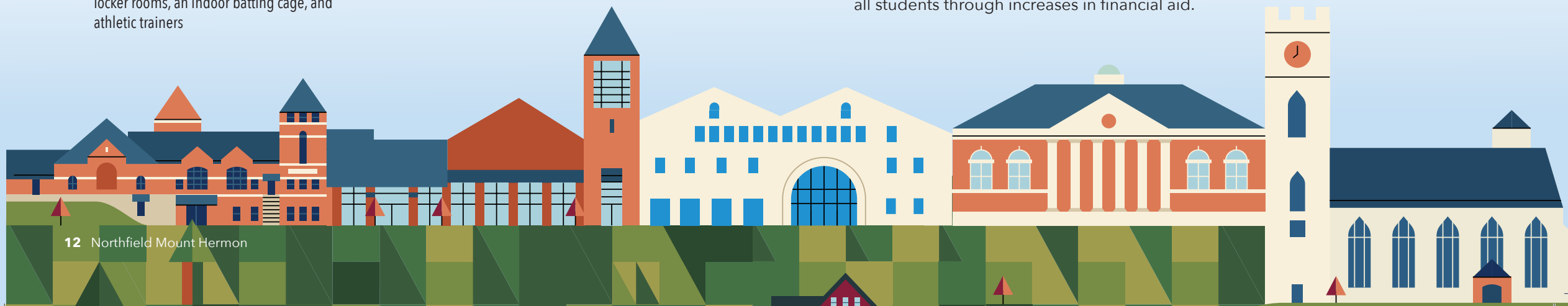
- 1,353 acres, including fields, woods, and Shadow Lake, with 215 core-campus acres
- 74 buildings, including the turn-of-the-century Memorial Chapel and historic cottages
- The Gilder Center, home to our math and science programs
- The Rhodes Arts Center
- Beveridge Hall classroom building, including the Center for Academic Strategies and Achievement (CASA)
- The Blake Student Center, with a snackbar, bookstore, post office, student publications, student lounge, and campus life offices
- A 34-acre farm, with fields, gardens, greenhouses, and maple sugar and cider houses
- An observatory with three telescopes and three CCD cameras for electronic imaging
- Schaffler Memorial Library, with thousands of digital and print resources for study, research, and enjoyment, plus video and podcast studios
- A recently renovated six-lane swimming pool
- Forslund Gym, with versatile courts, team and locker rooms, an indoor batting cage, and athletic trainers
- The Draper Riverhouse, with a crew dock and viewing deck on the Connecticut River
- The Calagione Fitness Center, with fitness equipment, free weights, and the strength and conditioning office
- The Li Wrestling Center
- The McCollum Arena hockey rink
- The NMH Ice Barn, a brand-new, 35,000-square-foot all-season hockey arena (opening fall 2026)
- The eight-lane, all-weather Miller Brothers running track
- 13 playing fields
- Six varsity tennis courts
- Two three-season turf fields, including one resurfaced in summer 2024 and one resurfaced in summer 2025
- An outdoor recreation area, with eight pickleball courts, outdoor basketball, and beach volleyball
- The O'Connor Health and Wellness Center, open 24/7 when school is in session
- 55 faculty homes and apartments on campus, plus 41 in-dorm apartments

## Travel Opportunities

NMH travel programs allow you to engage with other cultures, gaining intercultural competence and life experiences that will help you become an adaptable, flexible, and self-aware global citizen, ready to succeed at NMH and beyond.

- Sophomore Interdisciplinary Travel Program: Students are simultaneously enrolled in Biology, Humanities II: World History, and Humanities II: World Religion. Students travel with classmates and teachers for two weeks during the semester and study course themes including the history of colonization, religious systems, race, class, gender, natural resource management, ecology, food systems, urbanization, and art in the regional context. The destination follows a three-year rotation among three places: Brazil, Morocco/Spain, and South Africa.
- March Break Programs: Students participate in meaningful service-learning projects and academic exploration programs that align with NMH's mission and values. Recent programs have included wildlife and environmental stewardship in Costa Rica; healthcare, development, and service in Belize; and visual arts and culture in Japan. March break programs are open to all students in good standing.
- Language Immersion: Summer programs allow students studying French and Spanish to advance their skills in an immersive environment where they interact meaningfully with local people and cultures. These programs include a homestay component, a service-learning project, language classes, and cultural activities and events. Language-immersion programs are open to students who have successfully completed level-two of the chosen language. Recent opportunities have included Cusco, Peru, and Rennes, France.
- Connecticut River Student Coalition Outdoor Expedition: In this partnership with Deerfield Academy and Loomis Chaffee, students take part in a 10-day interdisciplinary learning adventure along one of New England's most prominent ecological features.
- Cocurricular Programs: Some cocurricular programs offer travel opportunities, such as Model United Nations conferences, the National High School Dance Festival, and the World Robotics Championship.

NMH continually works to develop new travel opportunities, and offerings vary year to year. All programs are dependent on enrollment and staffing. Participants apply separately and pay a program fee in addition to NMH tuition. Travel scholarships are available, and we are committed to ensuring that these programs are accessible to all students through increases in financial aid.





# Student Life

At NMH, we take seriously our commitment to help students become responsible, healthy, thoughtful, and compassionate young people.

We accomplish this in our classrooms, on the playing fields, in performing arts spaces, at workjob, and through our daily, informal connections with students in the dorms. We also make time for conversations about the complexity of adolescence and life, and we gather weekly in advisory groups to talk about choices that affect students' health and wellness, issues related to equity and social justice, and the skills students are developing to lead meaningful lives in community with others.

## We do this through:

- Dorm and school meetings, which provide formal settings for discussions
- Meetings with faculty advisors, teachers, coaches, and instructors to explore topics essential to students' social and emotional development
- Academic teaching that promotes collaboration, critical thinking, and inquiry
- Day-to-day work with dorm staff and other faculty to emphasize personal support, leadership, community building, and spiritual development

Students engage in fun, engaging activities both on and off campus, such as:

- Dances, movie nights, concerts, and performances on campus
- Sports events and dorm competitions
- Special events such as Hogolympics, Spirit Week, and Dwight Night
- Robotics tournaments, math competitions, Model UN conferences, and tournaments
- Trips to Boston as well as opportunities to eat, shop, and explore in local communities such as Amherst, Northampton, Keene, and Greenfield
- Trips to local activities such as the Franklin County Fair, Berkshire East Mountain Resort, and festivals
- Dance performances and theatrical events at Weston Theater, the University of Massachusetts Amherst, and Hartford Stage



debate

# A Day at NMH

7 am	Breakfast
8:50 am	A block (70 minutes) <sup>2 3</sup>
10:10 am	Morning meeting <sup>1</sup>
10:50 am	B block (70 minutes)
12:10–1:20 pm	Lunch
12:40 pm	C block (70 minutes)
2 pm	Advising <sup>4</sup>
2:25 pm	D block (70 minutes)
4:05 pm	Athletics and Cocurriculars
5 – 7:30 pm	Dinner
6:30 pm	Elective time <sup>5</sup>
8 pm	Mandatory study hall <sup>6</sup>
11:30 pm	Lights out <sup>7</sup>

1. Students take three 70-minute classes each day. The fourth 70-minute period can be used for study time, meeting with faculty, working on club or organization projects, fulfilling workjob responsibilities, or other cocurricular activities.
2. Monday Morning Meetings are an NMH tradition, where we come together as a community to share news, reflect, and celebrate our accomplishments.
3. Sleep researchers have found that most adolescents need time in the morning to “warm up” their brains before engaging in academic work. At NMH, we start classes consistently at 8:50 am, allowing students to come ready to work.
4. NMH advisors are at the center of the network of adults who support students. They create meaningful connections and help students get the best out of their NMH experience.
5. Elective time can be used for workjob, studying, meeting with faculty, or participating in performing arts groups, clubs, or affinity groups. Workjob can also be completed on the weekends.
6. Mandatory study hall is held Sunday through Thursday evenings. During study hall, students remain in their rooms or in dorm lounges. With permission, students may meet with faculty, go to the library, work on group projects, or attend math, science, or writing help sessions.
7. For 9th-graders, lights-out time is 10:30 pm on weeknights. For grades 10 to PG, lights-out time is 11:30 pm.

# Athletics

NMH provides students with one of the broadest and most inclusive athletics programs in the nation, one that supports everyone, from the elite athlete who aspires to the highest levels of competition to the beginner who seeks to challenge themselves by exploring a new interest or passion. A lineup of 33 sports, most with multiple levels of play, offers opportunities for students at all levels to learn, grow, and develop. Over 80% of our students participate on one of our nearly 70 teams each year.

Each year, 20 to 25% of our graduating class commits to compete in NCAA collegiate athletics, in all three divisions. In recent years, NMH graduates have gone on to compete in each of the Power 5 conferences, the Ivy League, the Patriot League, the Atlantic 10 Conference, the New England Small College Athletic Conference, the University Athletic Association, and other leagues.

Students can also take physical education courses to learn lifetime fitness skills as well as participate in our robust outdoor program, traversing the Connecticut River Valley's trails and waterways.

## ATHLETIC TEAMS

### FALL

- Cross-Country: boys' and girls' varsity and junior varsity
- Field Hockey: varsity and junior varsity
- Mountain Biking: combined varsity and junior varsity
- Rowing: boys' and girls' varsity and novice
- Soccer: boys' and girls' varsity, junior varsity, and 3rds
- Volleyball: girls' varsity, junior varsity, and 3rds

### WINTER

- Alpine Skiing: varsity and junior varsity
- Basketball: boys' and girls' varsity, junior varsity, and 3rds
- Fencing
- Ice Hockey: boys' and girls' varsity and junior varsity
- Nordic Skiing: combined varsity and junior varsity
- Swimming: boys' and girls' varsity; junior varsity
- Wrestling: boys' and girls' varsity and junior varsity

### SPRING

- Baseball: varsity
- Golf: varsity and junior varsity
- Lacrosse: boys' and girls' varsity and junior varsity
- Outdoor Team
- Rowing: boys' and girls' varsity and junior varsity
- Softball: varsity
- Tennis: boys' and girls' varsity and junior varsity

- Track and Field: varsity and junior varsity
- Ultimate Frisbee: boys' and girls' varsity and junior varsity
- Volleyball: boys' varsity and junior varsity



# The Arts

At NMH, students cultivate their understanding and skills in a wide range of artistic endeavors. We get them ready for a lifetime of arts participation and appreciation.

## VISUAL ARTS

We offer art courses at every level, open studio work time, and faculty members who are accomplished practicing artists.

### THE RHODES ARTS CENTER INCLUDES:

- The Gallery, which exhibits the work of well-known outside artists, students, and faculty in six shows over the course of the year
- A ceramics studio
- A design studio
- A digital photography studio and traditional photography darkroom
- A drawing studio
- Painting studios
- A printmaking studio

### ART INTENSIVES

- Music Immersion
- Theater Immersion

## PERFORMING ARTS

Whether you're a newcomer or a seasoned scene-stealer, you can become part of NMH's lively theater, dance, and music community. Take a class. Join an ensemble. Audition for a play. All the world's a stage!

### THE RHODES ARTS CENTER IS HOME TO:

- Concert Band
- Concert Choir
- Multiple theater productions a year, including a musical
- Hogappella a cappella group
- Honors Chamber Ensemble: NMH Singers
- Honors Chamber Ensemble: Select Treble Ensemble
- Honors Chamber Orchestra
- Honors Jazz Combo
- The Nellies girls' a cappella group
- NMH Junior Dance Company
- NMH Senior Dance Company
- NMH World Percussion Ensemble
- Northfield Mount Harmony a cappella group
- The One-Act Play Festival
- Stagecraft
- Symphony Orchestra
- Technical Theater Crew





# Workjob Program

At NMH, every student is responsible for a three-hour-per-week “workjob.” Workjob is the way students actively participate in the daily running of the school, from baking cookies in the Alumni Hall kitchen to giving campus tours to prospective students, from managing a sports team to doing chores on the NMH farm. Workjob is one of our oldest traditions, dating back to our founding in 1879.

## WORKJOB EXAMPLES:

- Engagement Leader in the admission office
  - archives aide
  - athletics department worker
  - athletics equipment room worker
  - athletics team manager
  - bakery worker
  - band manager
- biology assistant
  - chemistry assistant
  - choir manager
  - clinic aide
  - costume shop assistant
  - custodial worker
  - dance studio assistant
  - electronic recording assistant
  - farm worker
- kitchen worker
  - library aide
  - lifeguard
  - mail center worker
  - math study hall tutor
  - multicultural education assistant
  - music secretary
  - orchestra assistant
  - outdoor education assistant
  - Resident Leader
  - science study hall tutor
  - service-learning language instructor
  - snack bar worker
  - theater aide
  - trail maintenance worker
  - writing help tutor



# Cocurricular and Extracurricular Activities

At NMH, you’ll have access to a wealth of cocurricular and extracurricular opportunities. Cocurriculars are required; students choose from athletics teams, performing arts ensembles, community service groups, and many other classes and activities. Extracurriculars are optional and include clubs and organizations, most of them created and run by students.

## COCURRICULAR COURSES

- Health and Wellness (9th grade)
- Diversity and Social Justice (10th grade)
- College Counseling (11th grade)

## ACADEMIC CLUBS AND TEAMS

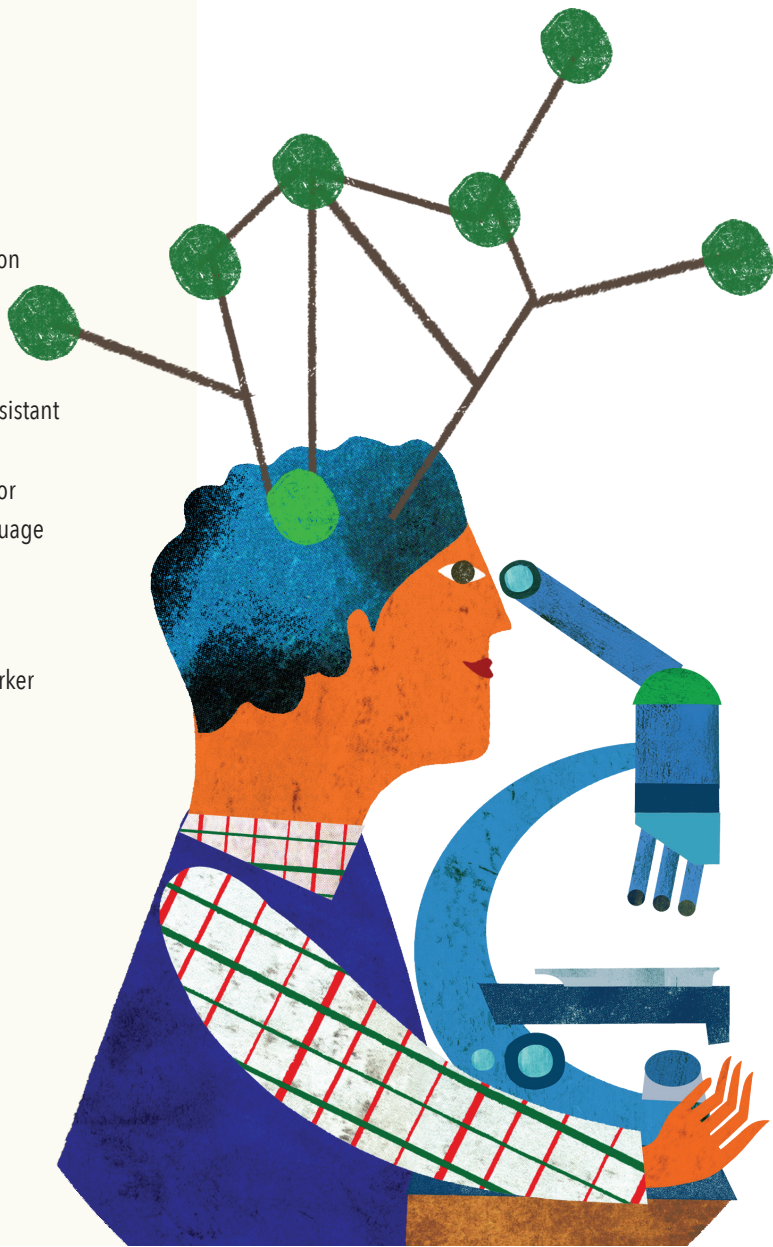
- Create
- Debate Society
- Math Club
- Model United Nations
- Robotics Team
- Science Club

## VISUAL ARTS COURSES

- Beginning with Clay
- Digital Drawing
- Exploring Watercolor
- Illustration
- Plein Air Painting
- Portrait Sculpture

## PERFORMING ARTS OPPORTUNITIES

- Ballet
- Choreography
- Concert Band
- Concert Choir
- Dance Companies of NMH  
(fulfills the arts and athletics group requirement)
- Hip-Hop Dance
- Hogappella a cappella group
- Jazz Dance
- Jazz Ensemble
- Mainstage Choreographer



## Cocurricular and Extracurricular Activities

Modern and Contemporary Dance  
Musical Theater Immersion  
NMH World Percussion Ensemble  
Northfield Mount Harmony a cappella group  
Private dance lessons  
Private music lessons  
Stage Band  
Stagecraft  
Symphony Orchestra  
Tap Dance  
Theater Immersion  
Theater Production Role  
The Nellies a cappella group

### MEDIA

Gemini yearbook  
Hogger News  
The Lamplighter student newspaper  
Mandala art and literary magazine  
WNMH Radio

### LEADERSHIP/ACTIVISM

Activities Programming Board  
Ecoleaders  
Interfaith Council  
Peer Educators  
Resident Leaders  
Student Congress  
Student Diversity Committee  
Student Engagement Leaders

### SERVICE-LEARNING AND VOLUNTEER ACTIVITIES

Big Brothers/Big Sisters  
Carry Me Home  
Clothing Drives  
Community Meals  
Dream4Reading  
Grassroot Soccer

Habitat for Humanity  
Mooncatcher Project  
Operation Happy Birthday  
Virtuosi

### COMMUNITY AFFINITY AND ALLIANCE GROUPS

African Students Association  
Asian American Students Association  
Breakaway Christian group  
Circle of Sisters  
Gender Sexuality Alliance  
Jewish Students Alliance  
Mindfulness Meditation  
Muslim Students Association  
Native Affinity Group  
Nature-Centered Beliefs Group  
Spanish and Latino/a Students Association  
St. Edmund Campion League of Catholic Students  
The Brothers

### INTERSCHOLASTIC AND IN-SCHOOL COMPETITIONS

Debate Society  
Instrumental Competition: Concerto Competition and Recital  
Math Club  
Model United Nations  
Music Districts  
New England athletics tournaments  
Robotics Team  
Science Club  
Senior Oratory Contest

## College Matriculation

NMH graduates go on to further their education at top colleges and universities across the country. Schools attended by at least four graduates from the past four years include:

New York University	32	Hamilton College	6
Northeastern University	29	Northwestern University	6
Boston University	20	University of Massachusetts Amherst	6
Cornell University	19	University of Pennsylvania	6
University of Vermont	15	University of Washington	6
Wesleyan University	15	American University	5
Bates College	13	Bentley University	5
Colby College	13	Brown University	5
Tufts University	13	Colgate University	5
Carnegie Mellon University	12	Franklin & Marshall College	5
Babson College	11	Lehigh University	5
Emory University	10	Pennsylvania State University	5
Trinity College	10	Santa Clara University	5
University of Toronto	10	Tulane University of Louisiana	5
Columbia University	9	University of New Hampshire	5
Boston College	8	University of North Carolina at Chapel Hill	5
Harvard College	8	University of Southern California	5
Hobart and William Smith College	8	University of Wisconsin-Madison	5
Pitzer College	8	Bryn Mawr College	4
University of California, Berkeley	8	Dartmouth College	4
University of Chicago	8	Emerson College	4
Williams College	8	Gettysburg College	4
Case Western Reserve University	7	McGill University	4
Connecticut College	7	Middlebury College	4
Georgetown University	7	Mount Holyoke College	4
Johns Hopkins University	7	Providence College	4
Kenyon College	7	Purdue University-Main Campus	4
Skidmore College	7	Rochester Institute of Technology	4
Syracuse University	7	Smith College	4
University of California, Los Angeles	7	University of Illinois Urbana Champaign	4
University of Colorado Boulder	7	Vassar College	4
University of Rochester	7	Wellesley College	4
Worcester Polytechnic Institute	7	Yale College	4
Colorado College	6		

# How to Apply

To be considered for admission to NMH, please supply the following:

## 1. Application

You may apply through one of two services. You might base this choice on the other schools you are applying to.

- Gateway to Prep Schools ([gatewaytoprepschools.com](http://gatewaytoprepschools.com)) or
- Standard Application Online ([ssat.org/admission/the-sao](http://ssat.org/admission/the-sao))

## Jan. 15, 2026: Deadline for a completed application

Students who wish to apply after the Jan. 15 deadline: Please contact our office so your admission counselor can best guide you through the application process.

## 2. Standardized Test Scores

This year, the general admission test (SSAT, ISEE, ACT, PSAT, or SAT) is not required.

- Testing will be a component in your application review only if you choose to submit it.
- The TOEFL is still required for non-native English speakers. We only accept test scores directly from testing organizations or affiliate partners. The current TOEFL score expectation is 100 IBT or greater. A TOEFL may be waived by your NMH admission counselor if you have completed your last two years of school in a fully English-based curriculum. Our school code for the TOEFL is 8011. We will also consider the IELTS or the Duolingo tests.

## 3. Recommendations

Submit English and math teacher recommendations, which must be from your current instructors.

## 4. Interview

All students are required to have an interview. To schedule an interview, please call the admission office at 413-498-3227.

For international applicants: Prospective students in countries from which Northfield Mount Hermon historically has received large numbers of applications are required to complete an interview with our partner organization, InitialView ([initialview.com](http://initialview.com)). Currently, NMH requires applicants from the People's Republic of China and South Korea to use this interview service. InitialView records a student's live, unscripted interview and sends us a copy, along with a sample of the student's writing. NMH admission counselors review and evaluate the interview and writing sample. Please contact InitialView directly to arrange an appointment as quickly as possible and no later than two weeks before NMH's Jan. 15, 2026, application deadline.

## 5. Additional Information

If you have additional information to add to your application (recommendations, updated transcripts, or our supplement), please send it via our online uploader.

In addition to the requirements listed above, supplementary material for athletes and visual and performing artists may be submitted; however, it is optional. We do not accept original artwork, CDs, or DVDs. Please email a link to [media@nmhschool.org](mailto:media@nmhschool.org). Include a brief description of the submission in the subject line.

We look forward to assisting you with your application. Please don't hesitate to contact us.

413-498-3227  
[admission@nmhschool.org](mailto:admission@nmhschool.org)

We will be delighted to help you navigate the admission process.



# Tuition and Fees 2025–26

Boarding Student	Fees	
\$77,070 (includes room and board)	\$1,625	General/activity, technology, health services
	\$1,425	Tuition refund insurance <sup>1</sup>
Day Student	Fees	
\$51,244	\$3,025	General/activity, meals, technology, health services
	\$948	Tuition refund insurance <sup>1</sup>
International Student (F-1 Status)	Fees	
\$77,070	\$2,621	General/activity, technology, health services, international student fee <sup>3</sup>
	\$1,425	Tuition refund insurance <sup>1</sup>
	\$2,715	School health insurance (mandatory) <sup>2</sup>

1. Tuition refund insurance is billed at 1.55% of your portion of tuition. This program is mandatory unless the full year's tuition and fees are paid by July 1, 2025.

2. Health insurance is mandatory for all students. All international students with F-1 student status, without exception, are required to enroll in the school insurance plan. All other students are required to provide proof of valid primary healthcare insurance. A copy of the front and back of your health insurance card is required as well.

3. The international fee is for students with F-1 status. It covers the maintenance of student's Form I-20 and their SEVIS record.

## Expected Additional Costs:

- Books and supplies typically average \$1,000 per year.
- NMH supports Macs and PCs, including Chromebooks (\$250 to \$1,200).
- A charter bus to NYC, Boston, or the airports is \$45 to \$65 for a one-way trip.

# Need-Based Scholarship Application Instructions

Financial assistance is need-based and awarded annually. NMH does not offer merit or academic scholarships. However, because the number of applicants exceeds the number of awards we can offer, a student's talents and achievements may determine which applicants will receive an offer of financial aid.

We partner with Clarity Financial, Inc. in our need-based scholarship application process.

The deadline to apply for need-based scholarships for the 2026–27 academic year is Jan. 15, 2026. You can create your Clarity Financial Aid Profile starting on Sept. 1, 2025. Upload these tax documents to your Clarity Financial Aid Profile by Jan. 15, 2026:

## U.S. Families

- 2025 W-2 forms (as soon as available)
- 2024 federal income tax return, signed, with all schedules and statements, and W2s/1099s
- 2023 federal income tax return, signed, with all schedules and statements, and W2s/1099s

## International Families

- Canadians: 2025 T-1 General and 2024 T-4 slips; 2022 T-1 General and 2023 T-4 slips
- Other international families: a notarized copy of your most recent income tax report and an earnings statement from your employer
- Three (3) months of your most recent bank statements
- NMH 2025–26 International Financial Aid Profile

## Additional Information

- Tax documentation for partnerships and corporations is required for tax years 2024 and 2023 (IRS Schedule K-1, Form 1065, Form 1120, or Form 1120s).
- Explanation of any unique or concerning circumstances you wish us to know about.

finaid@nmhschool.org  
413-498-3237  
nmhschool.org/admission



**NORTHFIELD  
MOUNT HERMON**

**Office of Admission**

One Lamplighter Way  
Mount Hermon, Massachusetts 01354  
413-498-3227

[admission@nmhschool.org](mailto:admission@nmhschool.org)



[nmhschool.org](http://nmhschool.org)