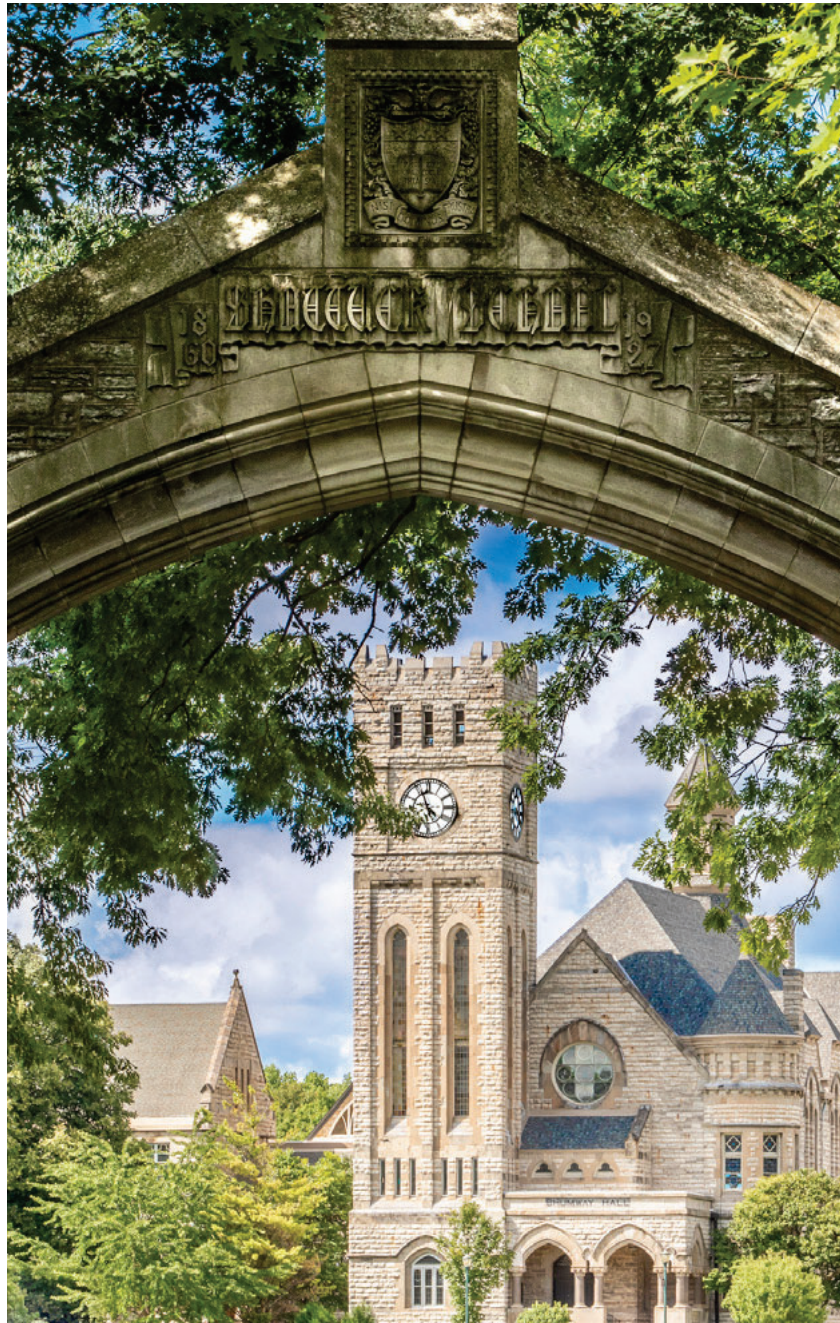


SHATTUCK·ST. MARY'S





## OUR MISSION

We are a global learning community that honors tradition while embracing innovation. By cultivating creative, independent thinking, we foster the transformation of our students to become citizens of integrity for an ever-changing world.

# At Shattuck-St. Mary's, we all have passions.

That's right, "passions," plural. School comes first, that's passion number one. Then there's your individual passion—whether you live on the ice or on the pitch, in the concert hall or in the lab.

Our world-class college preparatory curriculum, progressive blended learning class model, and state-of-the-art academic and athletic facilities combine with our strong sense of community to create an optimal learning environment, individualized to each and every SSM student.

Let us help you pursue  
your passion,  
your dreams,  
your FUTURE.







# ACADEMIC INNOVATION





Shattuck-St. Mary's School has distinguished itself with various unique academic offerings.

## SCHOLARSHIFT®

The most original academic program where all students participate is ScholarShift®, in which students in the upper grades are afforded flexible class schedules via a blended learning program. This greater flexibility allows students to not only prepare more fully for their soon-to-be college experience, but also offers the opportunity for students to pursue areas of scholarship, creativity, innovation, and community engagement that otherwise would not be feasible. Students engage in internships, independent guided learning, long-term service projects, and a myriad of endeavors in a designed academic space aptly named the weCreate® Center.

**CLICK  
HERE**

**To learn  
more about  
ScholarShift®!**

## weCREATE®

**CLICK  
HERE**

**To learn  
more about  
weCreate®!**

While the weCreate® Center is certainly a critical component of the ScholarShift model, it is also a facility that embodies the School's deep commitment to fostering innovation, creativity, and ideation. Students in the weCreate Center explore and learn in one of its studios under the mentorship of the weCreate staff.

More than a place, weCreate is the idea and belief that students can unlock their innate creativity when given the time, skills, resources, and encouragement to do so. It is about finding connections and seeing possibilities rather than limitations.

## BLENDED LEARNING

Students in grades 11 and 12 take all of their academic classes in the blended format. This means students attend regular classes on Mondays, Tuesdays, and Thursdays. On the other days, class material is available online through SSM's learning management system, Schoology. On Wednesdays and Fridays, students also have the option to meet in smaller groups or individually with their teachers during the regularly scheduled class time for extra help sessions or enrichment activities.

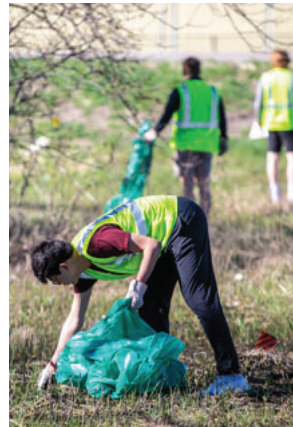
**CLICK  
HERE**

**To learn more  
about  
Blended  
Learning!**

In this model, as students progress, they are increasingly granted more flexibility in their regular class schedule in order to pursue their individual passions and interests.



# THE SSM EXPERIENCE





**Our tight-knit, supportive campus community is at the heart of the SSM experience. Students are inspired to achieve by the relationships they form here—it is through connections with their teachers, coaches, administrators, and peers that they find the guidance, motivation, and knowledge needed to reach their highest potential.**

## STUDENT LIFE

No COE? No problem! One of the trademarks of the SSM experience is the opportunity for all students to deeply engage in activities that ignite their individual passions. Our extensive list of student organizations, clubs, elective visual and performing arts courses, interscholastic sports teams, and extracurricular activities are designed to foster a diverse, inclusive, and positive community, supporting our students as they become citizens of integrity in our ever-changing world.

**CLICK  
HERE**

**To learn more  
about student  
life at SSM!**

## CAMPUS AND BOARDING LIFE

**CLICK  
HERE**

**To learn more  
about our  
Residence Halls!**

Three out of four SSM students live at the School, and there's a reason why! Nestled atop the river bluffs of Faribault, Minnesota, we're just 45 minutes south of the Twin Cities, offering the safety of a small town with the nearby amenities of a larger metropolitan area. Our 245-acre campus combines beautiful, historic buildings (some dating back to 1871!) and state-of-the-art facilities to support a first-rate learning and residential experience. Our seven residence halls, located on both the Upper School and Middle School campuses, are designed to help students make the transition to college life with ease—encouraging them to make new friends, manage their own time, and develop habits to ensure a healthy school-life balance.

## SPIRITUAL LIFE AND SERVICE

Shattuck-St. Mary's was founded as an Episcopal school by a missionary priest, the Rev. James Lloyd Breck, in 1858, and continues to honor its heritage to this day. True to the Episcopal ideology, we are an inclusive community grounded in respect for each of our members. Shattuck-St. Mary's is committed to developing and strengthening each student's individual spirituality within their own faith. Students, faculty, and staff gather for a weekly service in the Chapel of the Good Shepherd to worship and reflect on our values as a community.

**CLICK  
HERE**

**To learn more  
about our  
Spiritual Life &  
Service at SSM!**

Community service is a key part of our mission and is integrated into student life, with various service learning opportunities both on and off campus throughout the year.



# CENTERS OF EXCELLENCE





Our academic, athletic, and performing arts Centers of Excellence (COEs) are specialized, immersive programs integrated with our academic curriculum. COEs are designed to allow students to pursue their individual passions while simultaneously receiving a superior education.

## ACADEMIC COEs

The SSM academic program is built upon a foundation of a traditional U.S. curriculum including wide offerings of Advanced Placement (AP) and honors level courses. Students also have the option to enroll in one of SSM's Academic Centers of Excellence (COE).

The **BioScience COE** is a multi-year, experiential program for students interested in medicine, biomedical engineering, or scientific research.

The **Engineering COE** offers students hands-on experience in a wide range of engineering applications.

The **Major Center of Excellence** allows students to develop and undertake a series of dynamic experiences designed around their personal interests.

CLICK  
HERE

To learn more  
about SSM  
Academics!

## ARTS COEs

CLICK  
HERE

To learn more  
about SSM Arts!

For serious vocalists and instrumentalists, SSM offers Centers of Excellence Programs in **Pre-Conservatory Music** and **Vocal Performance**. These programs incorporate individualized training from world-class college professors and Master Teachers as part of the student's school day, along with performance opportunities at various concerts and competitions.

## ATHLETIC COEs

Our well-established athletic Center of Excellence programs in **Hockey, Soccer, Golf**, and **Figure Skating** combine elite-level training, development, and competition with the demanding academics of a college-prep school. Our goal is to develop great athletes who are also superb students and citizens of integrity.

SSM's unique approach emphasizes the fundamentals of skill development and execution, body conditioning, and tactics for physical and mental development. Our programs include a rigorous full-year schedule, with competition throughout the United States and Canada for all teams. Student-athletes are on the ice, the field, and the course six to seven days a week, and each participates in a year-round strength and conditioning program.

CLICK  
HERE

To learn more  
about SSM  
Athletics!

# PURSUE YOUR PASSION

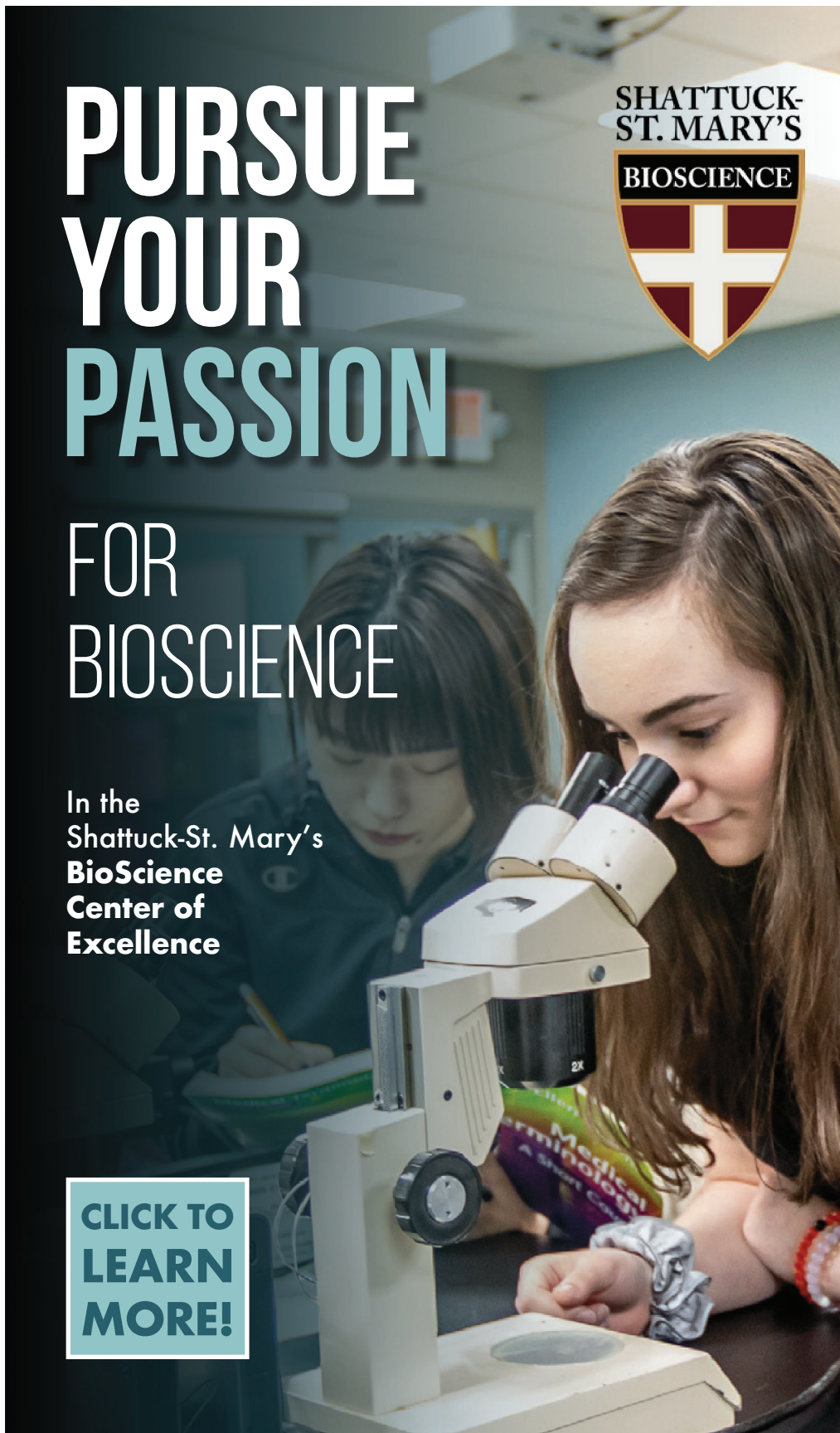
## FOR BIOSCIENCE

In the  
Shattuck-St. Mary's  
**BioScience  
Center of  
Excellence**

**CLICK TO  
LEARN  
MORE!**

SHATTUCK-  
ST. MARY'S

BIOSCIENCE





# BIOSCIENCE

INSPIRING AND EDUCATING FUTURE DOCTORS AND SCIENTISTS

## OUR APPROACH

The BioScience Center of Excellence is a multi-year, experiential academic program for high-ability high school students who are interested in pursuing a career in a health science field, including medicine, biomedical engineering, scientific research, and other areas.

The specialized academic programming includes:

- Courses in human anatomy, physiology, bioethics, and public health, designed to encourage the inquisitive nature of BioScience students.
- Courses that provide practical experience in laboratory techniques and laboratory-based research.
- Field trips that complement the BioScience courses, and expose students to the diverse array of science-related career paths.
- The program culminates in the design and implementation of a year-long original research project.

## OUR LEADERSHIP

Dr. Maren LaLiberty, the founding director of the BioScience COE, holds an M.D. and a B.A. in microbiology from the University of Minnesota. After practicing family medicine for several years, she decided to dedicate her life to being a passionate educator. Our adjunct faculty include highly experienced professionals in biomedical engineering, human physiology, and laboratory science.

## OUR FACILITIES AND LOCATION

Shattuck-St. Mary's School is located in the heart of "Medical Alley," a region of Minnesota deemed the global leader in health technology innovation. SSM's Fayfield Hall is a state-of-the-art science and engineering center with a laboratory space and seminar room dedicated to the BioScience Program.

## OUR STUDENTS' ACHIEVEMENTS

Two provisional U.S. patents for medical devices developed by students while in the BioScience Program.

College acceptances from Johns Hopkins University, Northwestern University, Swarthmore College, Dartmouth College, Washington University (St. Louis), Bowdoin College, New York University, Carleton College, University of Rochester, U.S. Naval Academy, University of Wisconsin-Madison, and more.

Multiple acceptances to medical, dental, and graduate school.

For more information or to inquire about the program, please visit:  
[www.s-sm.org/bioscience](http://www.s-sm.org/bioscience)

# PURSUE YOUR PASSION

SHATTUCK-  
ST. MARY'S

THE MAJOR



## FOR YOUR OWN PERSONAL INTEREST

In Shattuck-St. Mary's  
**The Major Center  
of Excellence**

**CLICK TO  
LEARN  
MORE!**





# THE MAJOR

## PURSUING A PERSONAL PASSION

### OUR APPROACH

The Major Center of Excellence provides students a framework with which to further their studies in an area of personal interest and a dedicated faculty member and team of peers to critique, review, and counsel project work. Students conduct high-level research in their chosen field and present their findings at a series of school-wide poster sessions that showcase their developing work, culminating with the completion of a comprehensive project portfolio upon graduation.

### OUR VISION

Our innovative academic model allows students in The Major COE the flexibility to explore and develop new areas of passion and interest as they also meet the rigors of our college preparatory program. Completing a focused, self-directed course of study through the program differentiates students from other college applicants, and provides them many of the benefits of a gap year.

### OUR LEADERSHIP

Our program is led by Mr. Craig Peck, a lifelong learner who brings a wealth of enriching real-world experiences to The Major. The director has more than a decade of classroom experience, including nine years as an English instructor at SSM, and is an insatiably curious educator with a wide variety of passions and interests—from biology and astronomy to classic film, guitar, and music. He has also mastered the art of learning and is eager to share his enthusiasm, intellectual curiosity, and expertise with program students.

### OUR FACILITIES

On campus, students have access to a wide range of facilities, including the historic Hirst Library, our state-of-the-art STEM Center Fayfield Hall, and the weCreate Center, which houses ten studios that provide students with the ability to edit video and sound, tinker with lighting and animation, explore writing, digital photography, architecture, graphic design, fashion design, and utilize the latest Adobe Creative Suite software. Students in The Major also travel beyond campus to enhance their experience, immersing themselves in locales as varied as their interests.

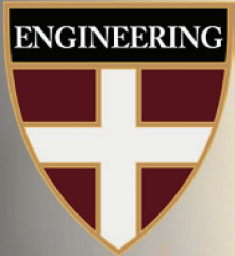
For more information or to inquire about the program, please visit:  
[www.s-sm.org/the-major](http://www.s-sm.org/the-major)

# PURSUE YOUR PASSION

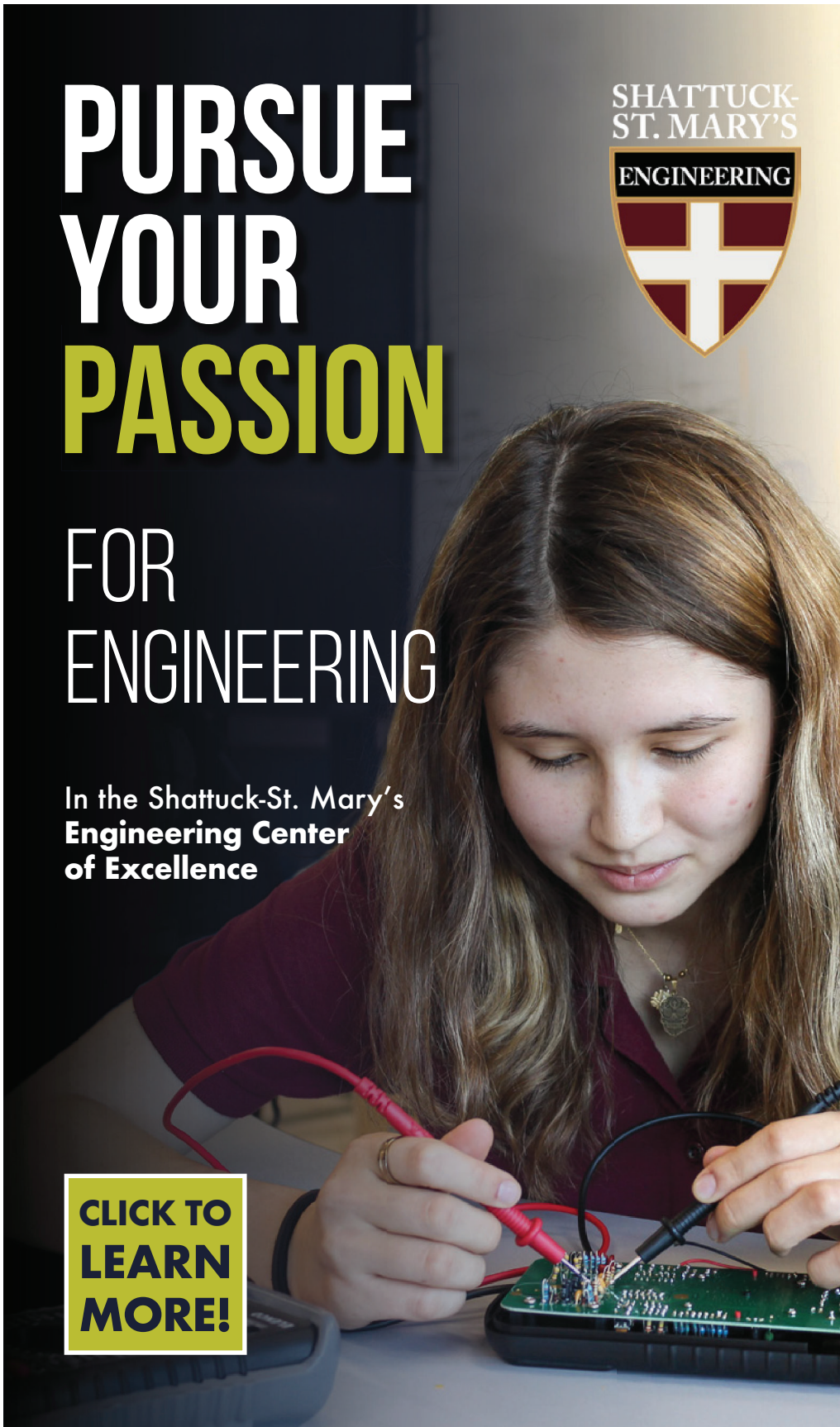
## FOR ENGINEERING

In the Shattuck-St. Mary's  
**Engineering Center  
of Excellence**

SHATTUCK-  
ST. MARY'S



**CLICK TO  
LEARN  
MORE!**





# ENGINEERING

## BUILDING FOR THE FUTURE

### OUR APPROACH

The Engineering Center of Excellence at Shattuck-St. Mary's is a fully engaging experience that introduces students to the world of engineering. It provides real, hands-on design and fabrication opportunities, while also preparing students for the rigors of college.

### BEGINNING CURRICULUM

The beginning student curriculum of the Engineering COE consists of Modeling and Prototyping, Basic Electronics and Computer Programming, and Fabrication Processes. The curriculum is designed to introduce students to the engineering design process using many industry-wide engineering technologies. After completing this series of courses, students will have many tools and resources to design and make the ideas of their imagination a reality.

### RETURNING STUDENT CURRICULUM

The returning student curriculum is designed to introduce students to the many engineering disciplines that exist in our world. The courses are selected based on 5 of the different EIT (Engineer in Training) exams, which engineering students take during their senior year of college. After completing this series of courses, students will have studied the job responsibilities of each major type of engineering, the ethical responsibilities of that engineer, and a few selected in-depth studies of topics in each major branch of engineering.

### ENGINEERING DESIGN PROJECT

Each term, students will be able to explore their individual passions to design a system or product that solves a problem, while maintaining any project constraints initially identified. Students will also be able to communicate effectively using professional poster presentations and a summative senior capstone presentation.

### OUR LEADERSHIP

Our program is led by a former practitioner in the field of engineering who brings a wealth of real-world engineering experience to the classroom.

### OUR FACILITIES

Fayfield Hall opened in 2011 as a state-of-the-art science and engineering center. The Engineering Lab includes a robotics lab, a virtual reality platform, 3-D printers, CNC machines, a laser cutter, a load frame, a composites work center, and equipment for use in metal and woodworking, as well as dedicated assembly and testing areas.

For more information or to inquire about the program, please visit:  
[\*\*www.s-sm.org/engineering\*\*](http://www.s-sm.org/engineering)

# PURSUE YOUR PASSION

FOR  
SINGING

In the Shattuck-St. Mary's  
**Vocal Performance  
Center of Excellence**

CLICK TO  
LEARN  
MORE!

SHATTUCK  
ST. MARY'S





# VOCAL PERFORMANCE

## SINGING WITH PASSION

### OUR APPROACH

The Vocal Performance Program at Shattuck-St. Mary's is a comprehensive, classical, and foundational music education centered around ensemble excellence and individual performance opportunities.

Whether you are looking to pursue music as a career, or hoping to set yourself apart from other university applicants, the VPP will prepare you for what lies ahead. Students in the VPP receive individualized training in voice and piano, college-level music theory, sing with one of our amazing choirs, and perform all over the country in a variety of settings. Performance opportunities include working with the Minnesota Opera, competing in NATS, collegiate vocal festivals, as well as a full calendar of recitals, concerts, and theater productions.

### OUR LEADERSHIP

Our faculty have experience in vocal performance at the collegiate and professional levels and are accomplished and active performers. They are committed to providing young singers with a well-rounded classical music education.

### OUR TRACK RECORD

Graduates of the VPP have gone on to study voice at Eastman School of Music, Curtis Institute of Music, Ithaca College, Lawrence University, Illinois Wesleyan, Louisiana State University, Luther College, the University of Chicago, and many others. VPP alumni have also competed in and won the prestigious Classical Singer Vocal Competition.

### OUR FACILITIES

- Individual soundproof practice rooms
- Choral and Instrumental Rehearsal Rooms
- Piano Lab
- Performances in the historic Newhall Auditorium and Chapel of the Good Shepherd

For more information or to inquire about the program, please visit:  
[\*\*www.s-sm.org/vocal-performance\*\*](http://www.s-sm.org/vocal-performance)

# PURSUE YOUR PASSION

FOR  
MUSIC

In the Shattuck-St. Mary's  
**Pre-Conservatory**  
Center of Excellence

SHATTUCK-  
ST. MARY'S

PRE-CONSERVATORY



**CLICK TO  
LEARN  
MORE!**



# PRE-CONSERVATORY

## FOR ASPIRING INSTRUMENTALISTS

### OUR APPROACH

Students can combine their passion for music with a rigorous college-preparatory academic program. The Pre-Conservatory Program offers serious musicians scheduled practice time during the school day, weekly lessons with Master Teachers, courses in Music Theory and Ear Training, regular chamber music rehearsals and coachings, numerous performance opportunities, master classes with world-renowned guest artists, and access to concerts featuring world-class performers.

### OUR LEADERSHIP

Our teachers are experienced professional musicians who have pursued advanced degrees in their respective disciplines. They are passionate about leading young musicians through an extensive classically-based program.

### OUR TRACK RECORD

- 1st place, 2020 Minnesota Orchestra YPSCA
- Featured Artist and Showcase Artist (violin), 2020 MPR's Minnesota Varsity Competition
- Grand Prize (violin), 2018 Dakota Valley Symphony Young Artists Competition
- Featured artists (violin, piano), 2018 MPR Minnesota Varsity Competition
- Grand Prize (piano), 2017 Gustavus Adolphus Concerto Competition
- Finalist (harp), 2017 Minnesota Orchestra YPSCA Youth Competition
- Grand Prize (violin), 2016 Mankato Symphony Concerto Competition
- Grand Prize (harp), 2016 Rochester Symphony "Playing with the Pros" Competition
- National Winner (piano), 2015 Music Teacher's National Association Music Competition
- Grand Prize (cello), 2015 La Crosse Symphony Orchestra "Rising Stars" Competition

### COLLEGE MATRICULATION

Our students are accepted into the finest college music programs in the world:

- |                                |                                |
|--------------------------------|--------------------------------|
| • The Juilliard School         | • University of Minnesota      |
| • Eastman School of Music      | • Rice University              |
| • University of Michigan       | • San Francisco Conservatory   |
| • Yale University              | • University of Texas - Austin |
| • Cleveland Institute of Music | • Bard College                 |
| • Manhattan School of Music    |                                |

For more information or to inquire about the program, please visit:  
**[www.s-sm.org/pre-conservatory](http://www.s-sm.org/pre-conservatory)**



SHATTUCK-  
ST. MARY'S



# PURSUE YOUR PASSION

FOR GOLF

In the Shattuck-St. Mary's  
**Golf Center of Excellence**

**CLICK TO  
LEARN  
MORE!**



# GOLF

## GOLF EXCELLENCE IN MINNESOTA

### OUR APPROACH

Students in the Shattuck-St. Mary's Golf Center of Excellence benefit from the unique combination of a college preparatory education and a premier golf experience all at one campus location. Our student-athletes combine their academic schedule with daily practice and a year-round, national tournament schedule that prepares them for play at the collegiate level and a possible professional career.

### OUR LEADERSHIP

Our coaching staff have played and coached at the professional and collegiate levels. They have built trust and networks within the collegiate and junior golf industry so our players will have the best opportunities to be recruited and play at the next level. The program is directed by an award-winning Class 'A' member of the PGA and a certified strength and conditioning coach.

### OUR TRACK RECORD

- 15+ individual age group champions at national junior golf tournaments, with over 30 runner up and third place performances
- 100% college placement, with graduates competing at some of the best college programs in the country, including Florida State, Notre Dame, Creighton, Drake, and Northern Illinois
- Multiple Top 10 finishes in AJGA, HJGT, and FCWT events, U.S. Amateur Participants, and First Team All-FCWT members

### OUR FACILITIES

- Unlimited access to the School's 18-hole, 6,500-yard championship course, located across the street from campus
- Year-round access to our indoor golf training facility with a 2,800 sq. ft. putting and chipping green for short game work and three heated hitting bays for unrestricted ball flight during inclement weather
- Leading-edge technology including JC Video, V1, Trackman, FlightScope, SkyTrak, and Swing Caddie launch monitors, as well as E6 Golf 18-hole simulator
- Dedicated outdoor practice range and bunker along with a 18,000 square foot putting and chipping green
- State-of-the-art weight training and conditioning facility

For more information or to inquire about the program, please visit:  
[www.s-sm.org/golf](http://www.s-sm.org/golf)

# PURSUE YOUR PASSION

FOR  
SOCCER

In the  
Shattuck-St. Mary's  
**Girls Soccer**  
**Center of**  
**Excellence**

CLICK TO  
LEARN  
MORE!

SHATTUCK-  
ST. MARY'S

SOCCER





# GIRLS SOCCER

THE WHOLE IS GREATER THAN THE SUM OF ITS PARTS

## OUR APPROACH

Shattuck-St. Mary's Girls Soccer Center of Excellence is a well-established, elite-level soccer development program for players in grades 7-12. Our program provides nearly double the training hours, games, and showcase opportunities than most other programs, with the added benefit of being uniquely built into the demanding academic schedule of a college preparatory school.

Our program includes a 10-month training and competition platform with a full-time coaching staff, full-time athletic trainers, and access to strength training, video analysis, and individual player development programs.

## OUR LEADERSHIP

Our head coaches have years of diverse coaching experience with a track record of developing players and teams at the highest levels. Our assistant coaches bring high level playing experience and an ability to mentor and relate the collegiate experience to our players. Working together, our coaches provide a holistic, integrated approach to player and team development.

## OUR TRACK RECORD

The SSM Girls Soccer COE has consistently demonstrated success in helping our students achieve their ambitions to play college soccer. More than 125 of our alumni have gone on to play at over 100 different universities, including prestigious soccer programs such as UCLA, Florida State, Penn State, the University of North Carolina-Chapel Hill, and Rutgers.

Members of the Girls Soccer COE have also gone on to play (and medal!) at national, Olympic, and professional levels.

## OUR FACILITIES

- Dane Family Fieldhouse—a full-sized (115x70 yard) indoor synthetic turf field
- Full-sized outdoor synthetic turf field
- Full-sized natural grass field situated on the scenic Parade Field
- Dedicated team locker rooms, a video room for team and individual analysis, and an athletic training center providing aquatic therapy
- Well-equipped, state-of-the-art weight training and conditioning facility

For more information or to inquire about the program, please visit:  
[www.s-sm.org/soccer](http://www.s-sm.org/soccer)

# PURSUE YOUR PASSION

FOR  
SOCCER

In the  
Shattuck-St. Mary's  
**Boys Soccer**  
Center of  
Excellence

CLICK TO  
LEARN  
MORE!

SHATTUCK-  
ST. MARY'S

SOCCER



# BOYS SOCCER

A SCHOOL AND DEVELOPMENT PROGRAM UNLIKE ANY OTHER

## OUR APPROACH

We support passionate athletes who are serious about their growth and development as a player, student, and person. A member of the MLS NEXT elite youth development platform, our Soccer Center of Excellence provides an enriched player development environment that is fully integrated into a rigorous academic curriculum. Our student-athletes aspire to reach higher levels in the game while simultaneously benefiting from an outstanding college preparatory program.

## OUR PHILOSOPHY

SSM Soccer is built on the belief that we are always on the pursuit of becoming better, striving to grow and learn each day and each season. There is a built-in challenge to become better, but there is joy to be found in the challenge; in realizing that perseverance is an important part of character development. Our purpose is to develop players to their maximum potential by providing the best training environment. We are the place for the aspiring pro, collegiate All-American, Academic All-American, and the player that gives his all to his team.

## OUR PLAYERS

Our players play with a joy that emanates from within. They give themselves to the game, and in the end, the game, even in its inevitable pain and grief, brings lasting joy. We seek to develop creative, independent thinkers who work collaboratively with their teammates to solve problems and overcome challenges. To do so, players have to be technically excellent to execute their solutions. They work tirelessly and are mentally strong to persevere through the challenges that will continually come their way, believing that mastery is within their control.

## OUR FACILITIES

- Dane Family Fieldhouse—a full-sized (115x70 yard) indoor synthetic turf field
- Full-sized outdoor synthetic turf field
- Full-sized natural grass field situated on the scenic Parade Field
- Dedicated team locker rooms, a video room for team and individual analysis, and an athletic training center providing aquatic therapy
- Well-equipped, state-of-the-art weight training and conditioning facility

For more information or to inquire about the program, please visit:  
[www.s-sm.org/soccer](http://www.s-sm.org/soccer)



# PURSUE YOUR PASSION

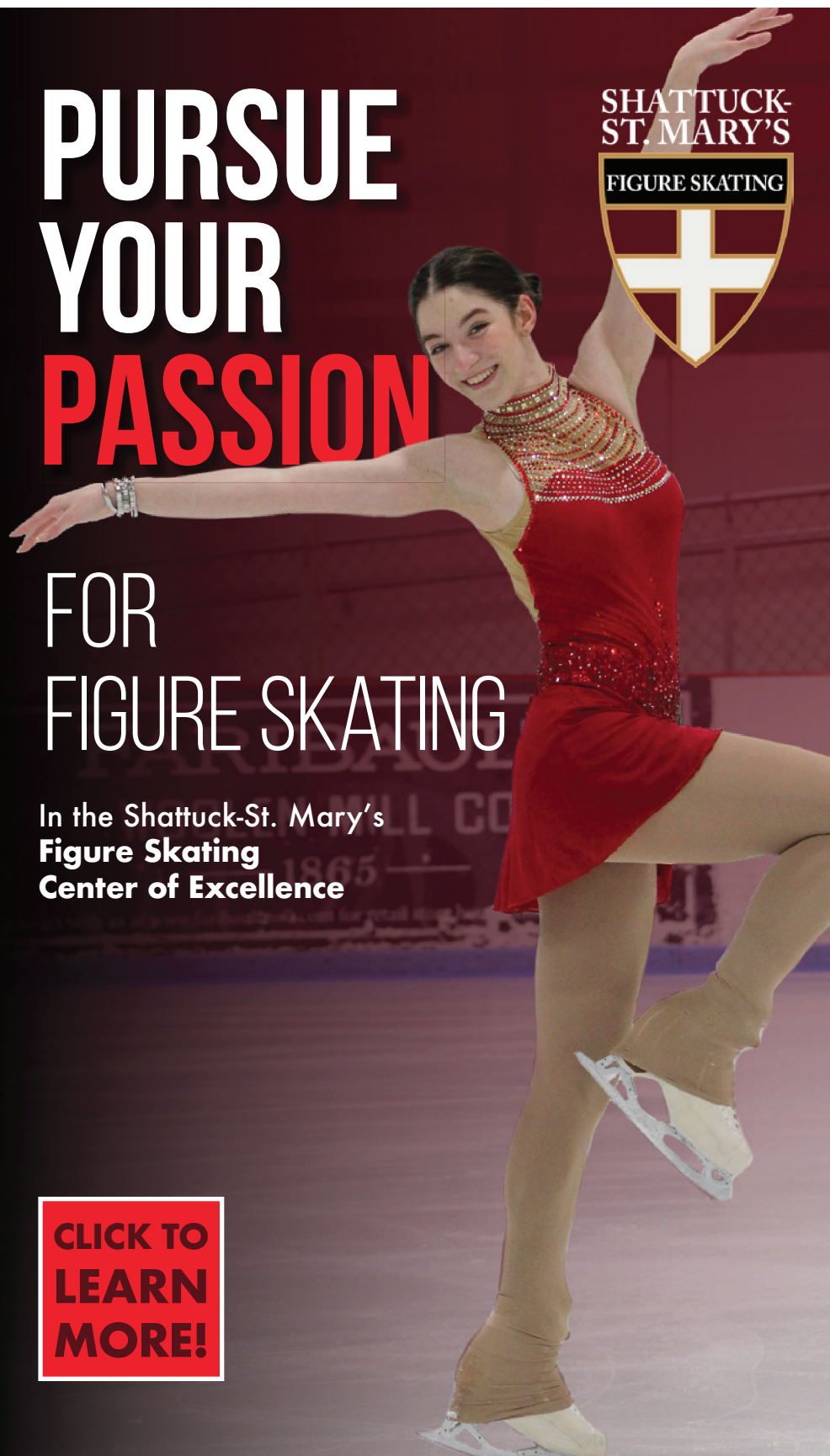
## FOR FIGURE SKATING

In the Shattuck-St. Mary's  
**Figure Skating**  
**Center of Excellence**

**CLICK TO  
LEARN  
MORE!**

SHATTUCK-  
ST. MARY'S

FIGURE SKATING



# FIGURE SKATING

## A PROGRAM FOR THE COMMITTED SKATER

### OUR APPROACH

We have pioneered the concept of combining excellence in college preparatory academics and intensive figure skating training. We believe this approach gives serious skaters the chance to pursue their academic and college aspirations alongside their figure skating dreams. Our program is not only for the competitive skater but also for the skater that is committed and loves to train daily. We allow for skaters to work towards their individual goals while being surrounded by an encouraging team and still have the opportunity to experience other aspects of school life.

Our program provides up to five competitions, three test sessions, and two ice shows per year. Our skaters receive 3+ hours of on-ice training daily, including tech, style, and power classes, private and group lessons. Additionally, off ice jump, strength and conditioning, and dance classes are offered weekly.

### OUR LEADERSHIP

Our coaches have skated professionally and offer extensive national and international coaching experience to all age groups. As certified members through the Professional Skaters Association (PSA), coaches travel with our athletes to various competitions worldwide. Additionally, skaters have frequent opportunities to train with renowned guest coaches, such as Surya Bonaly, Phillip Mills, and others. We also provide full-time athletic trainers, counselors, and nursing staff.

### BEYOND SSM

Our figure skaters have successfully transitioned from Shattuck-St. Mary's to fulfilling skating opportunities beyond our Arch. Students have taken gap years to skate professionally with shows like Disney on Ice and Royal Caribbean Cruise Lines. Some of our former students have also successfully pursued synchronized and individual skating at the collegiate level. The passion to skate doesn't end at graduation.

### OUR FACILITIES

- Two NHL regulation-sized arenas and a 3v3 ice rink
- New in 2020, a state-of-the-art, 10,500-sq. foot weight training and physical conditioning facility
- SSM Sports Complex provides dedicated locker rooms, a video room for team and individual analysis, and an athletic training center with aquatic therapy.

For more information or to inquire about the program, please visit:  
[www.s-sm.org/figure-skating](http://www.s-sm.org/figure-skating)

# PURSUE YOUR PASSION

FOR  
HOCKEY

In the  
Shattuck-St. Mary's  
**Girls Hockey**  
Center of Excellence

SHATTUCK-  
ST. MARY'S

HOCKEY



**CLICK TO  
LEARN  
MORE!**





# GIRLS HOCKEY

## SSM = ICE HOCKEY EXCELLENCE

### OUR APPROACH

We believe our players must be great citizens, great students, and great athletes. The SSM Girls Hockey program emphasizes the fundamentals of skill development and execution, body conditioning, and tactics for physical and mental development. Our student-athletes excel on and off the ice. SSM proudly claims more Olympians as former students than any other high school or club program in the nation.

All teams play a rigorous seven-month schedule, averaging 50-55 games a season, with tournament play throughout the United States and Canada. Our student-athletes are on the ice five to seven days a week. Each player participates in a rigorous, year-round strength and conditioning program, utilizing our expansive and well-equipped weight training facility.

### OUR LEADERSHIP

Each team draws on the talent and experience of our top-level coaching staff, including former NHL, professional, and Division I coaches. Goalkeepers have a customized goaltending training program.

### OUR TRACK RECORD

- Nine Tier I U19 USA Hockey National Championships
- Five Tier I U16 USA Hockey National Championships
- One USA Hockey Girls High School National Championship
- One 2022 Olympic Gold Medalist; Two Silver Medalists
- Four 2018 Olympic Gold Medalists; One Silver Medalist
- Four 2014 Olympic Silver Medalists
- Three Patty Kazmaier Awardees
- 45 players have represented the US or Canada on U18 and senior National Teams
- 240 alumni have gone on to play NCAA DI and DIII hockey

### OUR FACILITIES

- Two NHL regulation-sized arenas and a 3v3 ice rink
- New in 2020, a state-of-the-art, 10,500-sq. foot weight training and physical conditioning facility
- SSM Sports Complex provides dedicated locker rooms, a video room for team and individual analysis, and an athletic training center with aquatic therapy.

For more information or to inquire about the program, please visit:  
**[www.s-sm.org/hockey](http://www.s-sm.org/hockey)**

# PURSUE YOUR PASSION

## FOR HOCKEY

In the  
Shattuck-St. Mary's  
**Boys Hockey**  
Center of Excellence

**CLICK TO  
LEARN  
MORE!**

SHATTUCK-  
ST. MARY'S

HOCKEY



# BOYS HOCKEY

## SSM = ICE HOCKEY EXCELLENCE

### OUR APPROACH

We believe our players must be great citizens, great students, and great athletes. The SSM Boys Hockey program emphasizes the fundamentals of skill development and execution, body conditioning, and tactics for physical and mental development. Our student-athletes excel on and off the ice. SSM proudly claims more Olympians and NHL athletes among its former students than any other high school or club program in the nation.

All teams play a rigorous seven-month schedule, averaging 50-65 games a season, with tournament play throughout the United States and Canada. Our student-athletes are on the ice five to seven days a week. Each player participates in a rigorous, year-round strength and conditioning program, utilizing our expansive and well-equipped weight training facility.

### OUR LEADERSHIP

Each team draws on the talent and experience of our top-level coaching staff, including former NHL, professional, and Division I coaches. Goalkeepers have a customized goaltending training program.

### OUR TRACK RECORD

- 10 Tier I U18 USA Hockey National Championships
- Two Tier I U16 USA Hockey National Championships
- Three Tier I U14 USA Hockey National Championships
- Two USA Hockey Boys High School National Championships
- 103 NHL Draft Picks (Two #1 overall; 17 1st round)
- Over 500 College and Junior level players
- 13 Olympians; Two Gold Medalists, Three Silver Medalists, Two Bronze Medalists
- 16 IIHF World Junior Champions
- One Hobey Baker Award Winner

### OUR FACILITIES

- Two NHL regulation-sized arenas and a 3v3 ice rink
- New in 2020, a state-of-the-art, 10,500-sq. foot weight training and physical conditioning facility
- SSM Sports Complex provides dedicated locker rooms, a video room for team and individual analysis, and an athletic training center with aquatic therapy.

For more information or to inquire about the program, please visit:  
**[www.s-sm.org/hockey](http://www.s-sm.org/hockey)**



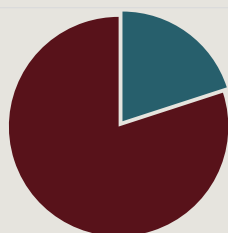


SHATTUCK-ST. MARY'S

# 2023-2024 FAST FACTS

# 399

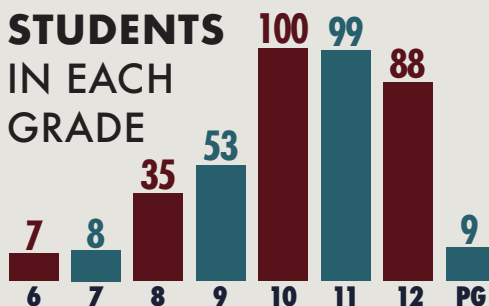
TOTAL ENROLLMENT



20% DAY STUDENTS

80% BOARDING STUDENTS

STUDENTS  
IN EACH  
GRADE



42 & 17  
STATES COUNTRIES



STUDENT TO  
FACULTY RATIO

# 10

AVERAGE  
CLASS SIZE



# SHATTUCK-ST. MARY'S COLLEGE PLACEMENT

During the past five years (2019-2023), virtually all of Shattuck-St. Mary's graduates were accepted by one or more institutions. Some students elected to do post-graduate work, defer their admission for a year, or play junior hockey.

Albany College of Pharmacy & Health Sciences (1)	Macalester College (2)	University of Alberta (1)
Alexandria College (1)	Mercyhurst University (1)	University of British Columbia (1)
American Musical & Dramatic Academy (1)	Miami University, Oxford (1)	University of Calgary (1)
American University (4)	Michigan State University (3)	University of California, Berkeley (3)
Amherst College (1)	Millersville University of Pennsylvania (1)	University of California, Davis (3)
Arizona State University (1)	Milwaukee School of Engineering (1)	University of California, Irvine (1)
Baylor University (1)	Minnesota State University Mankato (2)	University of California, Los Angeles (1)
Bemidji State University (2)	Minnesota State University Moorhead (1)	University of California, San Diego (6)
Blinn College (3)	Missouri State University (2)	University of California, Santa Barbara (4)
Boston College (6)	Montana State University (1)	University of Canterbury (1)
Boston University (4)	Mount St. Mary's University (1)	University of Chicago (1)
Bowdoin College (1)	Nazareth College (2)	University of Colorado at Boulder (2)
Bowling Green State University (1)	New School (1)	University of Connecticut (2)
Brown University (1)	New York Institute of Technology (2)	University of Dayton (2)
Bryn Mawr College (1)	New York University (7)	University of Delaware (3)
Bucknell University (2)	North Dakota State University (1)	University of Denver (3)
Butler University (2)	Northeastern University (5)	University of Glasgow (1)
California State University Long Beach (1)	Northwestern University (1)	University of Illinois, Urbana-Champaign (4)
California State University San Luis Obispo (1)	Oberlin College (1)	University of Maine (1)
Campbell University (1)	Odisee - Brussels Campus (1)	University of Massachusetts Amherst (1)
Canisius College (1)	Ohio State University (6)	University of Memphis (1)
Carleton College (2)	Quachita Baptist University (1)	University of Miami (1)
Carnegie Mellon University (1)	Pennsylvania State University (4)	University of Michigan (3)
Case Western Reserve University (4)	Pomona College (1)	University of Minnesota, Duluth (5)
Clarion University (1)	Presbyterian College (1)	University of Minnesota, Twin Cities (13)
Clark Atlanta University (1)	Princeton University (3)	University of Montana (2)
Coe College (1)	Providence College (2)	University of New Hampshire (1)
Colby College (3)	Purdue University (4)	University of North Carolina at Charlotte (1)
Colgate University (3)	Queen's University (4)	University of North Carolina at Chapel Hill (1)
College of St. Benedict (1)	Quinnipiac University (4)	University of Notre Dame (2)
College of St. Scholastica (3)	Radford University (3)	University of Pennsylvania (1)
College of the Holy Cross (4)	Regis University (1)	University of Portland (2)
Colorado School of Mines (3)	Rensselaer Polytechnic Institute (3)	University of Richmond (1)
Columbus State University (1)	Roanoke College (1)	University of Rochester (5)
Concordia College (3)	Rochester Institute of Technology (1)	University of San Diego (3)
Cornell University (2)	Sacred Heart University (1)	University of South Carolina Columbia (1)
Creighton University (3)	San Jose State University (1)	University of South Dakota (1)
Curtin University (1)	Savannah College of Art & Design (1)	University of St. Thomas (6)
Dartmouth College (4)	School of the Art Institute of Chicago (1)	University of Tampa (1)
DePaul University (1)	School of Visual Arts (3)	University of Texas, Austin (1)
Dixie State University (1)	Seattle Pacific University (1)	University of Texas, Dallas (1)
Drake University (1)	Seattle University (1)	University of Toronto (8)
Duke University (1)	Seton Hall University (1)	University of Utah (1)
Eastern Oregon University (1)	Simmons University (1)	University of Vermont (1)
Eastman School of Music, University of Rochester (1)	Smith College (1)	University of Virginia (2)
Elmira College (1)	South Central College (1)	University of Washington (7)
Emory University (3)	South Dakota School of Mines & Technology (1)	University of Wisconsin, LaCrosse (1)
Fashion Institute of Design & Merchandising (1)	Southern Methodist University (1)	University of Wisconsin, Madison (4)
Ferris State University (1)	Southwest Baptist University (1)	University of Wisconsin, Milwaukee (1)
Florida Atlantic University (1)	Southwest Minnesota State University (1)	University of Wisconsin, Parkside (1)
Fordham University (1)	St. Cloud State University (1)	University of Wisconsin, River Falls (1)
Franklin Pierce University (2)	St. Francis Xavier University (1)	University of Wisconsin, Stevens Point (1)
George Mason University (1)	St. Joseph's University (1)	University of Wisconsin, Stout (1)
George Washington University (1)	St. Lawrence University (1)	Upper Iowa University (1)
Georgetown University (4)	St. Louis University (1)	Valparaiso University (1)
Georgia Institute of Technology (1)	St. Mary's University (1)	Villanova University (2)
Gonzaga University (4)	St. Michael's College (1)	Virginia Military Institute (1)
Grand View University (1)	St. Olaf College (2)	Virginia Polytechnic Institute (1)
Guilford College (1)	Stockholm University (1)	Wake Forest University (1)
Gustavus Adolphus College (1)	Stonehill College (1)	Washington University in St. Louis (1)
Hamline University (1)	Stony Brook University (1)	Western Illinois University (1)
Harvard College (3)	SUNY Albany (1)	Western University (1)
High Point University (1)	Syracuse University (2)	William Penn University (1)
Holy Cross College (1)	Technologico de Monterrey (1)	William Woods University (1)
Howard University (2)	Texas A&M, Corpus Christi (1)	Wofford College (1)
Indian Hills Community College (1)	Texas Christian University (1)	Xavier University (2)
Indiana University (3)	Tiffin University (1)	Yale University (1)
Indiana University - Purdue University Indianapolis (1)	Trine University (1)	
Iowa State University (2)	Trinity Christian College (1)	
Iowa Western Community College (3)	Trinity College (1)	
Ithaca College (1)	Tufts University (2)	
Kent State University (1)	Tulane University (1)	
La Salle University (1)	Union College (5)	
Lake Forest College (3)	Union University (1)	
Lawrence University (1)	United States Naval Academy (1)	
Loyola Marymount University (1)	United States Military Academy (1)	
Loyola University (2)	University of Auckland (1)	

## AFFORDING SSM

A child's education is one of the most important decisions for a family to make. We understand the significant financial commitment and sacrifices many families make to enroll at SSM. With more than \$7 million awarded to over half of the student body each school year, SSM has one of the largest financial assistance budgets of private schools in Minnesota.

Our financial aid program is designed to help families join SSM. This program allows families to apply for tuition assistance, taking their financial circumstances into account, and making a SSM education affordable to many qualified students who could not otherwise join our school community.

**CLICK  
HERE**

**To learn more  
about Financial  
Aid at SSM!**

## HERE'S HOW TO APPLY!

**1**

**INQUIRY FORM** Complete the general inquiry form on our admissions page at [www.s-sm.org](http://www.s-sm.org).

**Click to Inquire Now!**

**2**

**ONLINE APPLICATION** Upon submission of the inquiry form, each parent/guardian will receive an email from [s-sm@myschoolapp.com](mailto:s-sm@myschoolapp.com) with a username and link to create a password for the myschoolapp system. This will allow you to start the online application.

**3**

**RECOMMENDATION FORMS** In addition to the online application, there are SSM recommendation forms required from your English and Math teachers as well as the school Counselor/Principal. These forms can be emailed or mailed to SSM.

**4**

**TRANSCRIPTS AND TESTING** We require two years of transcripts and testing for students entering grades 9-12 (SSAT, PSAT, ACT or SAT). Applicants whose first language is not English will be required to take the TOEFL or another standardized English exam accepted by the Director of International Recruitment.

**5**

**VISIT AND INTERVIEW** We encourage applicants to visit campus. If an applicant is unable to visit, an interview will be completed using Skype, ZOOM, or another video call program. All applicants must be interviewed to complete their application.

**6**

**ADMISSIONS DECISIONS** Applicants will be notified by email when their application has been reviewed and an admission decision has been posted.